

ARGOS : target list for commissioning run night
13/12 - 19/12/2015

December 4, 2015

NAME	RA	DEC	Type	Comments
“Technical” stars				
Hip1872	00:23:39.70784	+52:00:52.2686	9.701 Hband	
Hip9565	02:02:52.96195	+11:21:58.5094	9.220	
Hip9680	02:04:30.61296	+31:40:01.2221	7.745	
Hip17706	03:47:31.73430	+53:56:55.7717	8.090	
Hip18130	03:52:35.73284	+29:31:04.2550	9.276	
Hip28711	06:03:50.11650	+30:10:09.2044	9.95	
Hip29132	06:08:40.71161	+09:28:41.6873	7.464	
Hip38663	07:54:58.04068	+30:51:30.1006	9.081	
Hip49628	10:07:43.47038	+23:59:30.4060	9.676	
Star clusters				
W3	02:25:36	+62:05:04	IRC	
[BDS2003]65	04:11:10	+51:09:58	IRC	
Hyades	04:26:54.0	+15:52:00	open-cluster	
[BDS2003]67	04:40:39	+50:27:39	IRC	
[BDS2003]70	05:22:47	+33:25:26	IRC	
[BDS2003]69	05:28:11	+34:25:28	IRC	
M35	06:08:54.0	+24:20:00	open-cluster	
NGC2419	07:38:09	+38:52:55	GIC	
MPIA targets				
Maffei1	02:36:35	+59:39:18	Massive Ell.	
Maffei2	02:41:00.0	+59:36:00	Spiral Gal	
IC342	03:46:48.5	+68:05:47.0	Starburst Gal.	
UGCA86	03:59:48.300	+67:08:18.60	Late type Gal.	
GAL192.16-3.82	05:58:13.56	+16:31:58.3	(J2000) HII region	
MPE targets				
*SDSSJ1110+6459	11:10:20.0	+64:59:50.2	lens cluster arc	deep K-band (~30min)
- (G1)	00:33:41.2	+02:42:22.6	lens	deep K-band
- (G2)	10:50:39.5	+00:17:30.5	lens	deep K-band
NGC2775	09:10:20.1	+07:02:17	gal.	JHK images
NGC718	01:53:13.3	+04:11:45	gal.	JHK images
NGC3351	10:43:57.7	+11:42:13	gal.	JHK images
NGC3227	10:23:30.6	+19:51:54	gal.	JHK images
INAF targets				
NGC1068	02:42:40.7	-00:00:48	G	
NGC4102	12:06:23.0	+52:42:40	G	
M66	11:20:15.0	+12:59:28.64	G	
NGC4490	12:30:36.04	+41:38:39.07	G	
M95	10:43:57.7	+11:42:14	G	
M96	10:46:45	+11:49:12	G	
NGC3593	11:14:37	+12:49:04	G	
NGC3675	11:26:08	+43:35:09	G	

- see also for the MPE JHK galaxy imaging : Martini et al. 2003, Moorwood et al. 1996, Prieto et al. 2005. Aim to obtain circumnuclear dust maps.

- for the lens arc, see Stark et al. 2013, and SGAS HST program.

1 Visibilities & finding charts

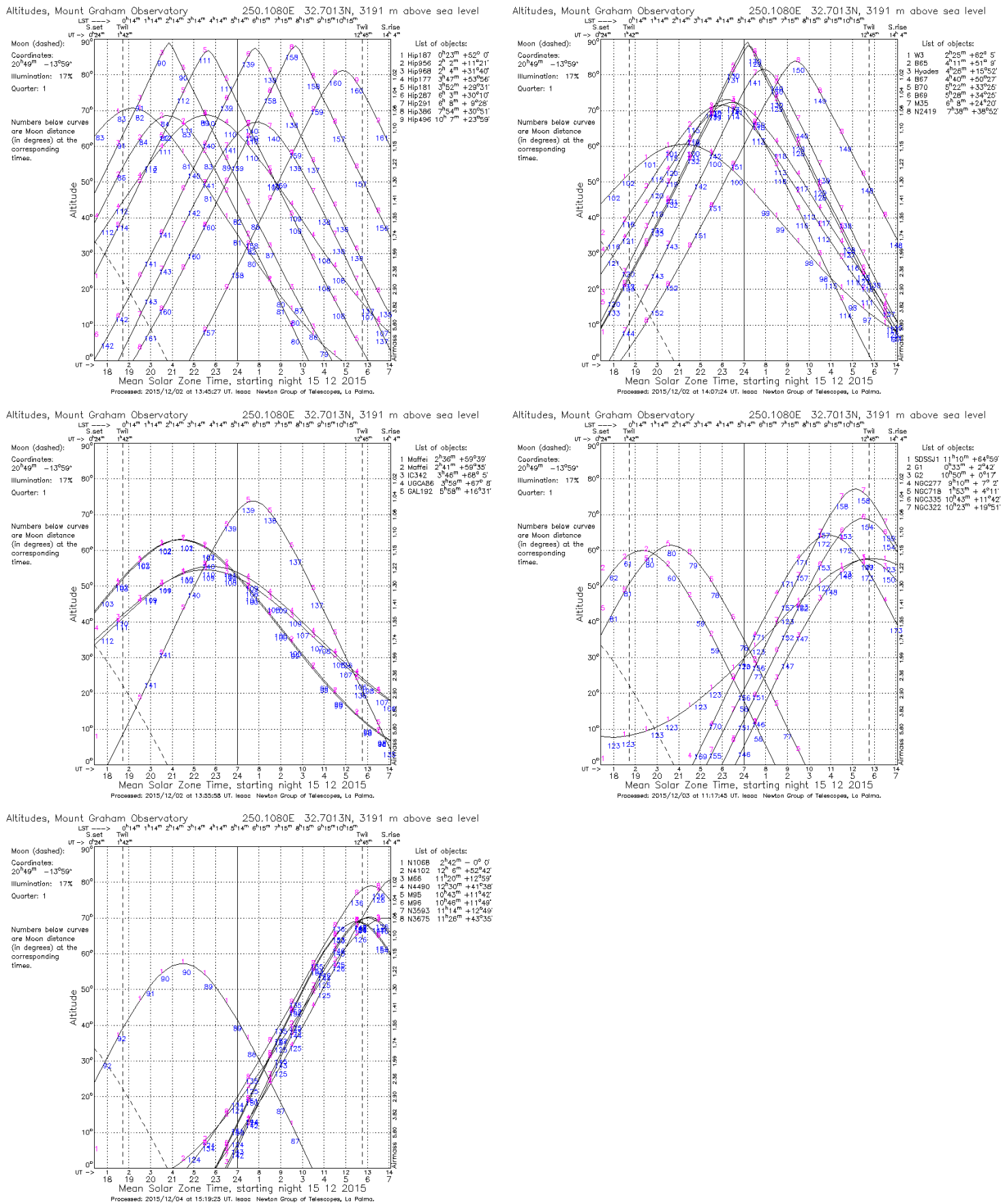


Figure 1: (Top Left) Hipparcos stars. (Top Right) Star cluster targets. (Middle left) MPIA targets. (Middle right) MPE targets. (Bottom) INAF targets.

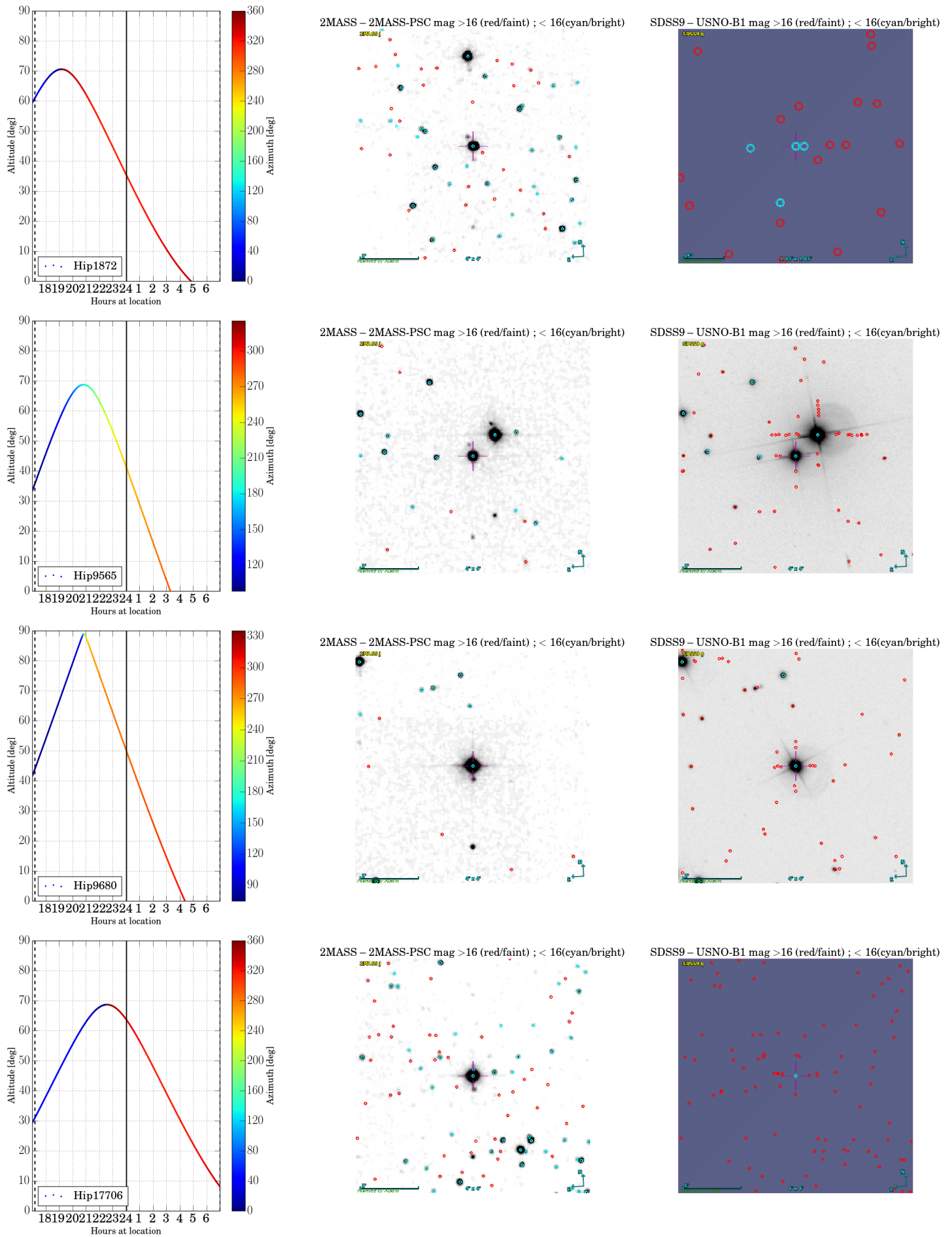


Figure 2: Hip stars.

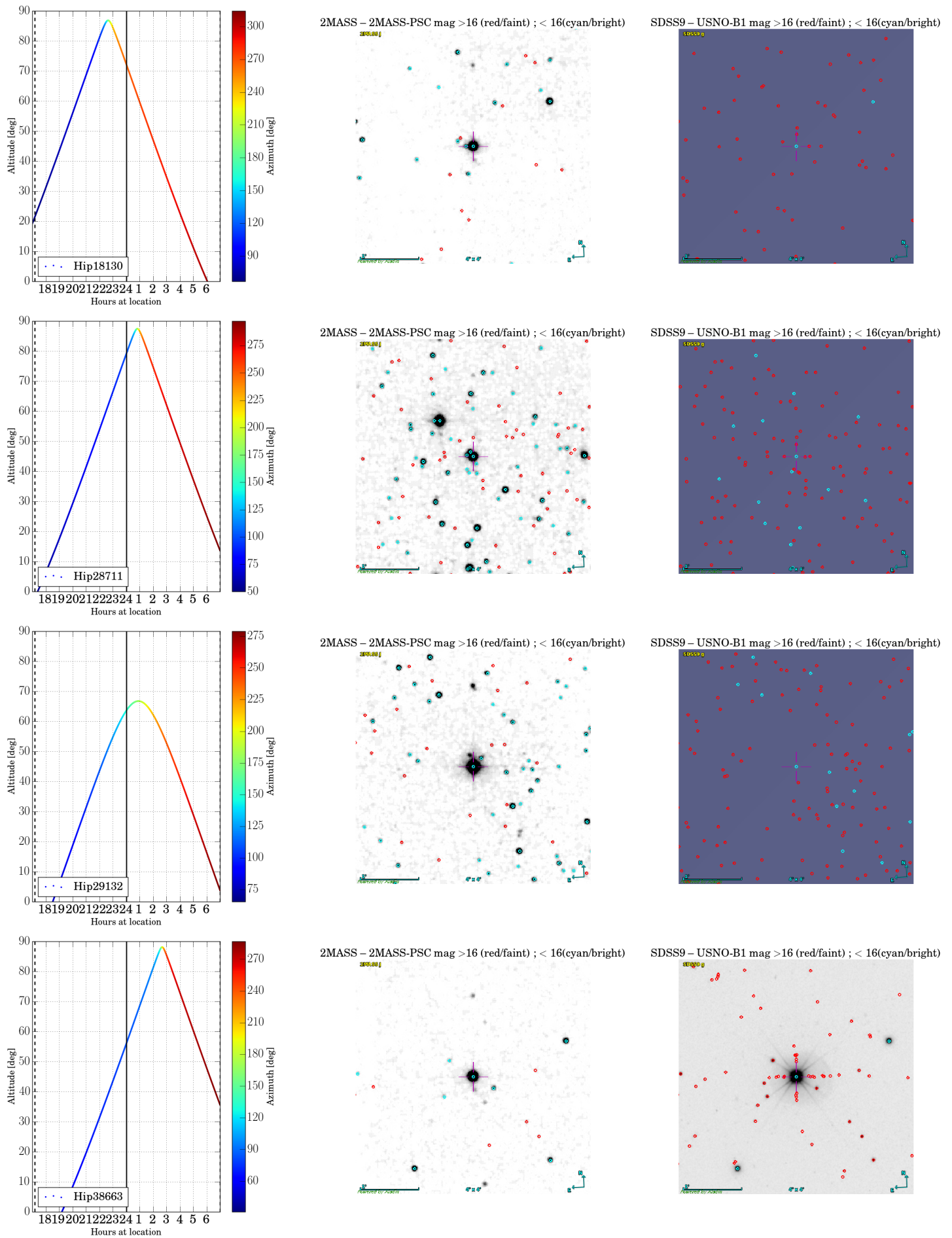
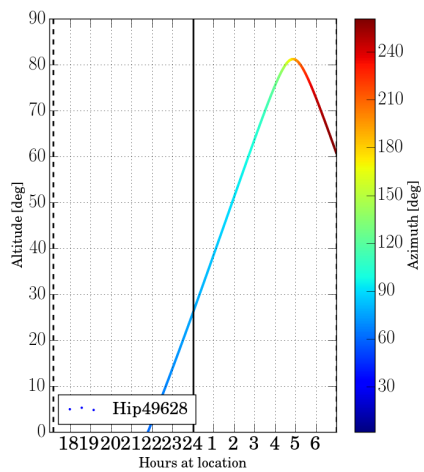
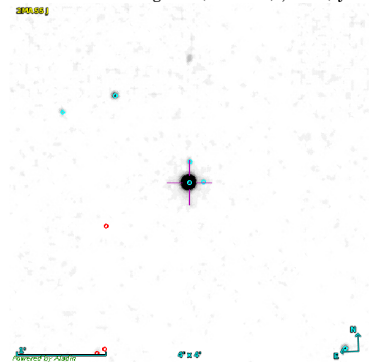


Figure 3: *con't* Hip stars.



2MASS - 2MASS-PSC mag >16 (red/faint) ; < 16(cyan/bright)



SDSS9 - USNO-B1 mag >16 (red/faint) ; < 16(cyan/bright)

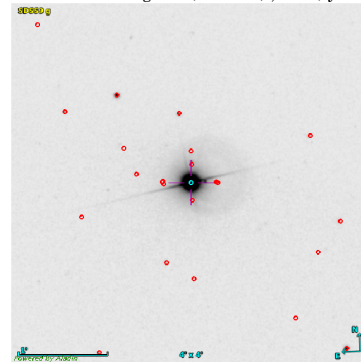


Figure 4: *con't* Hip stars.

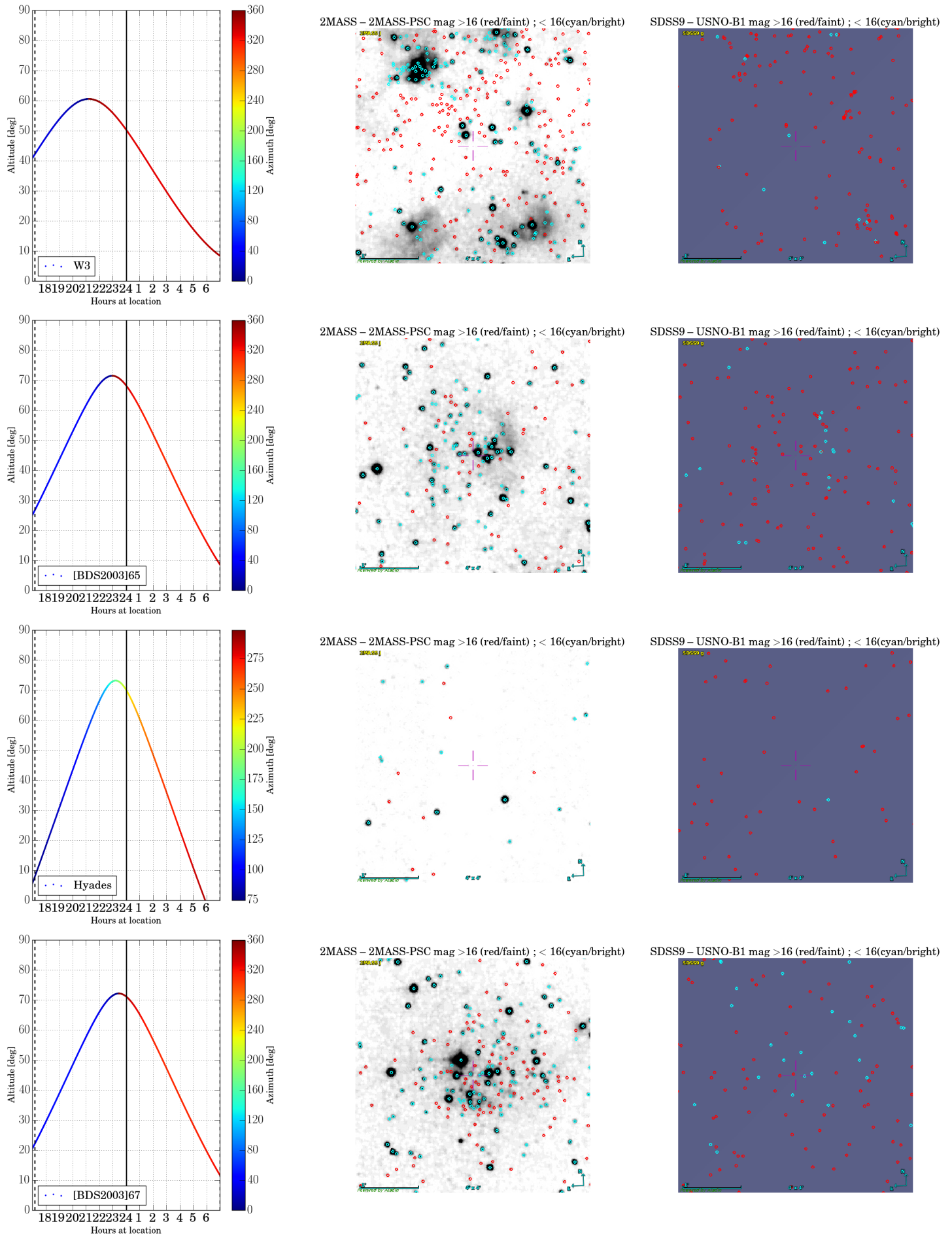


Figure 5: Star clusters.

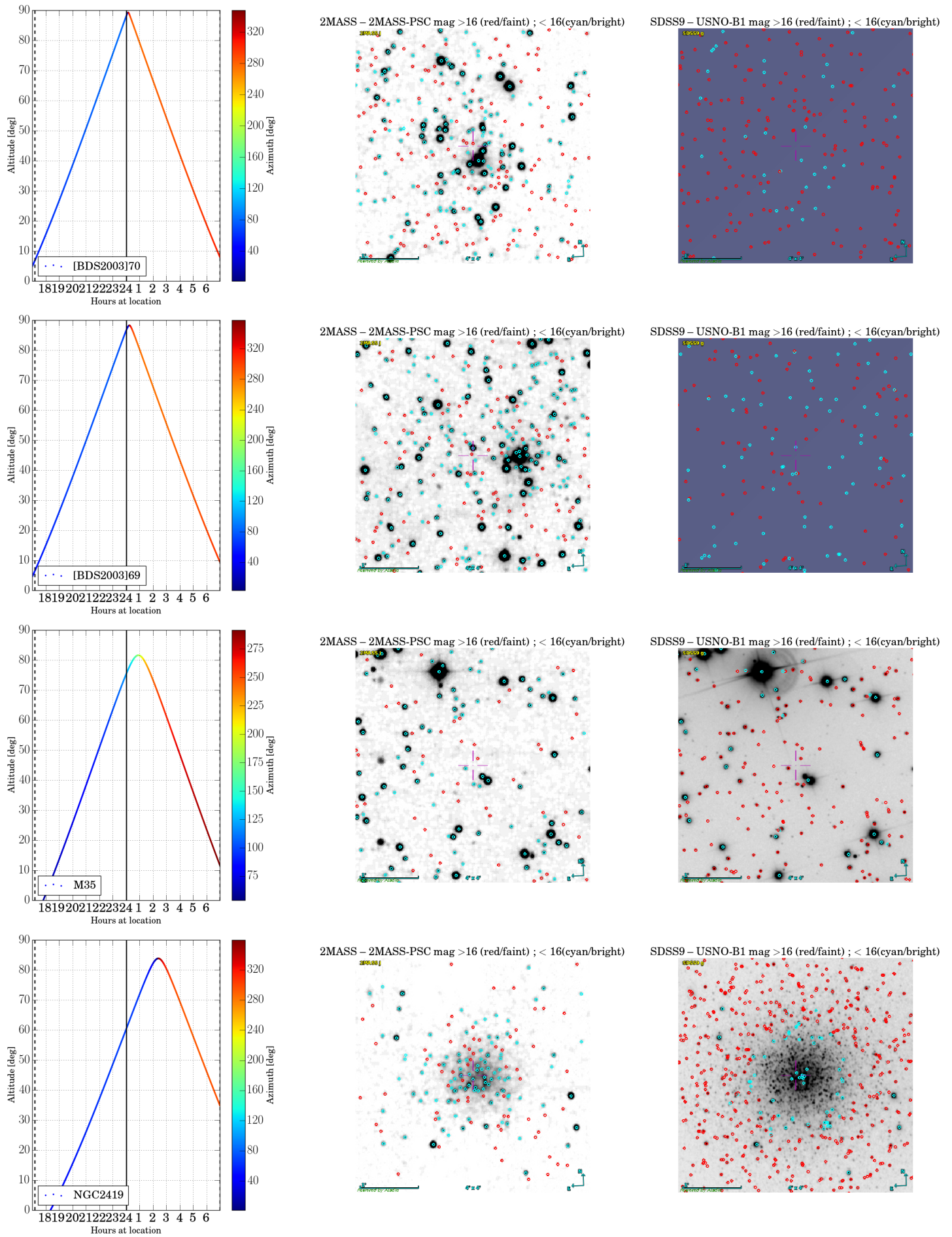


Figure 6: *con't* star clusters.

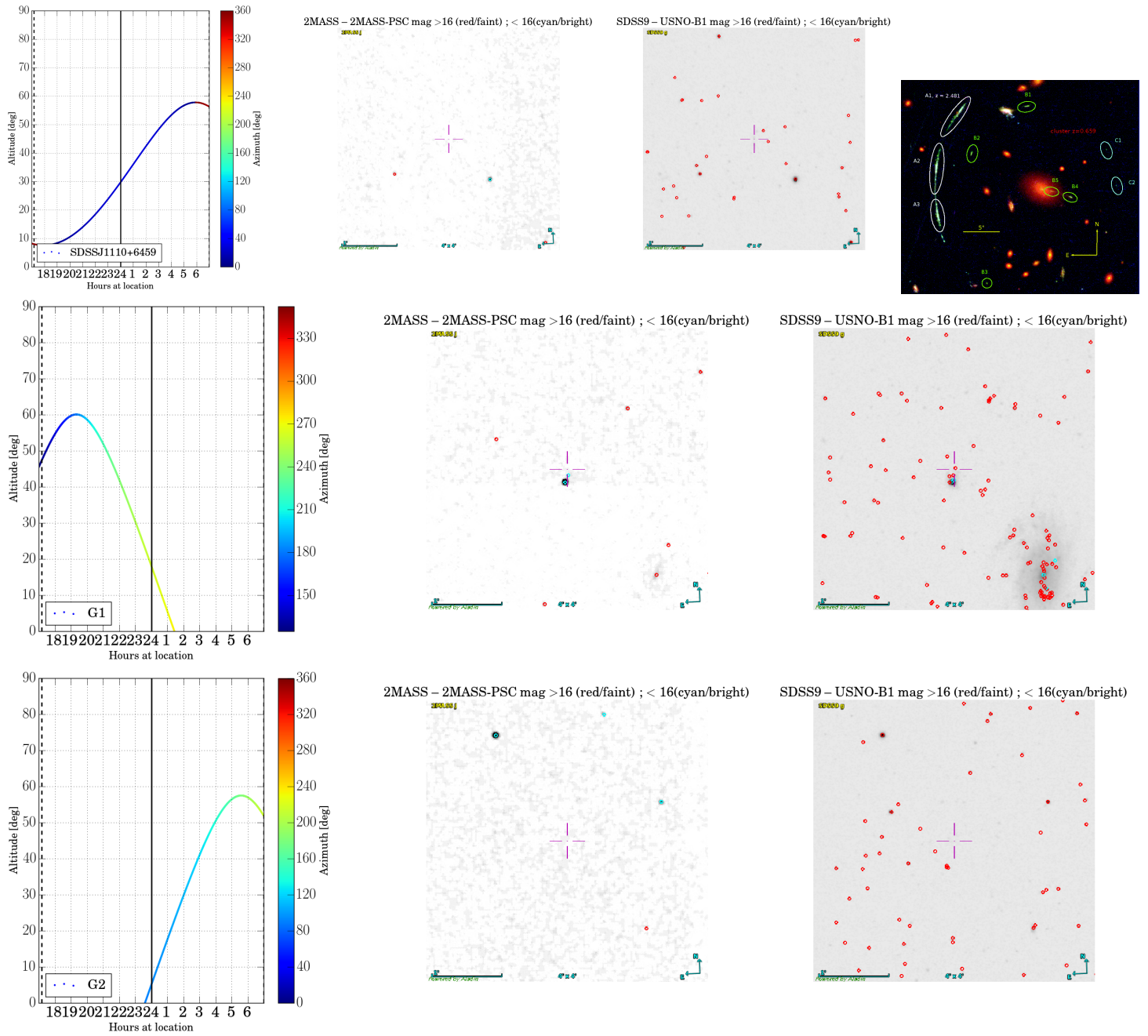


Figure 7: MPE targets - high-z.

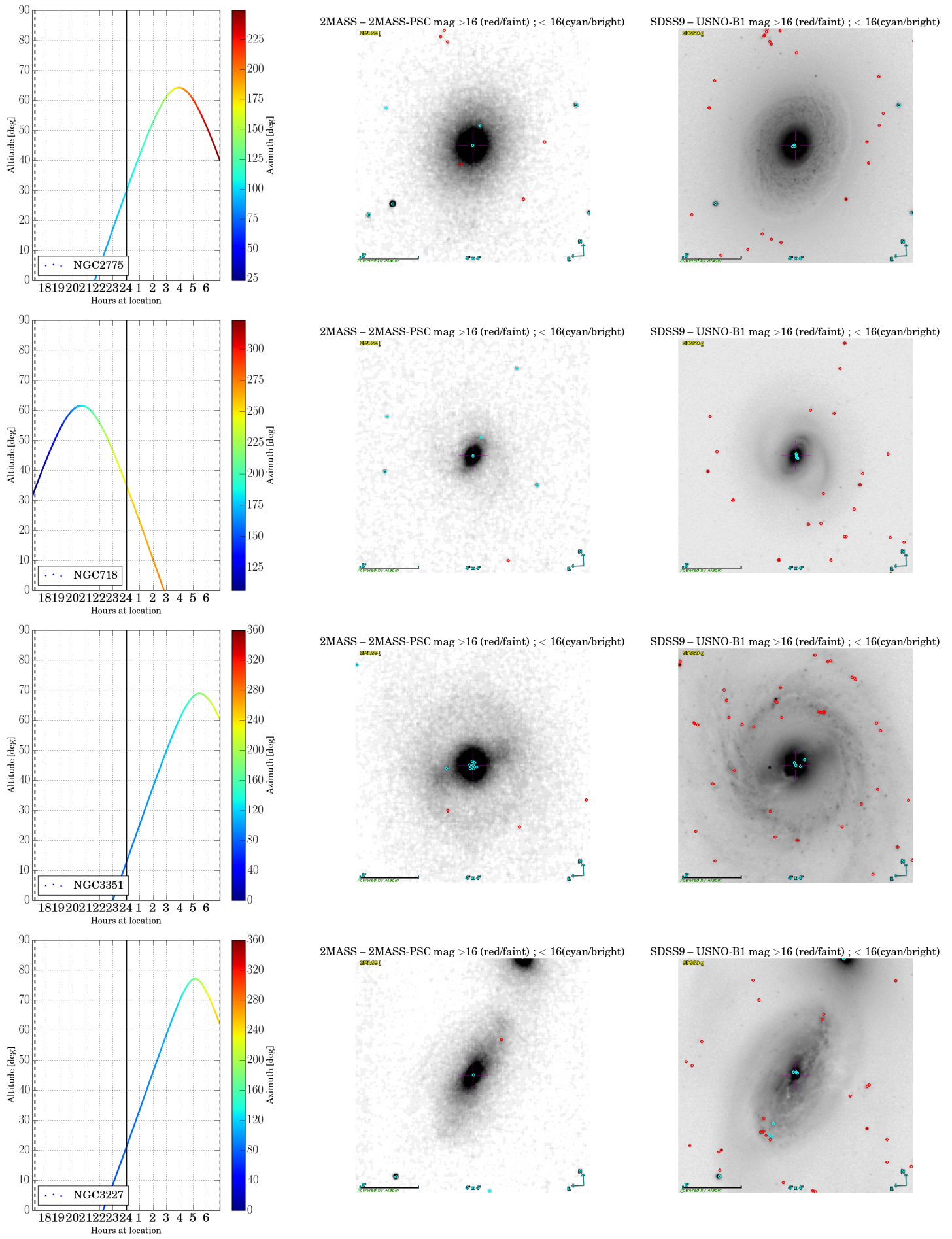


Figure 8: MPE targets - nearby galaxies.

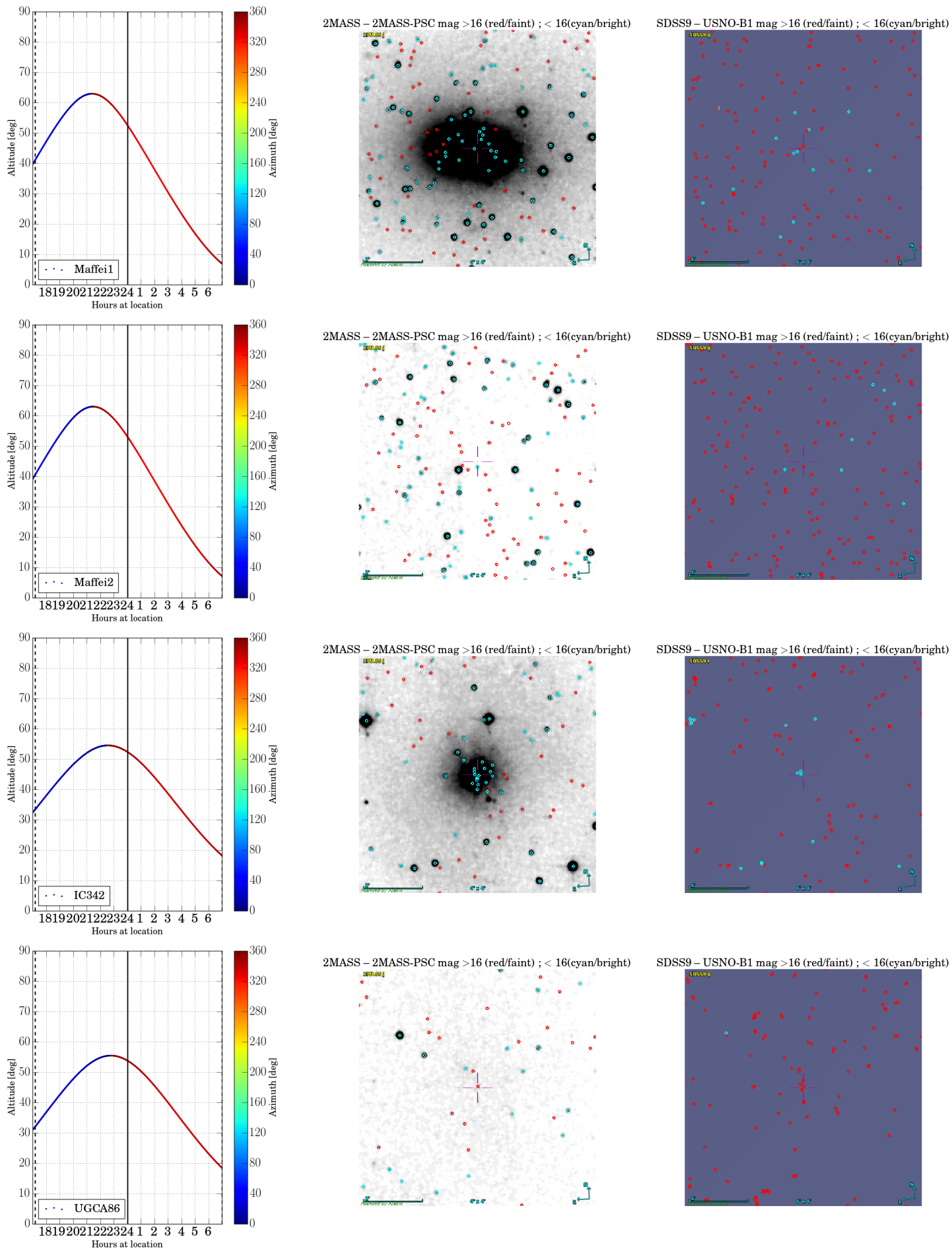
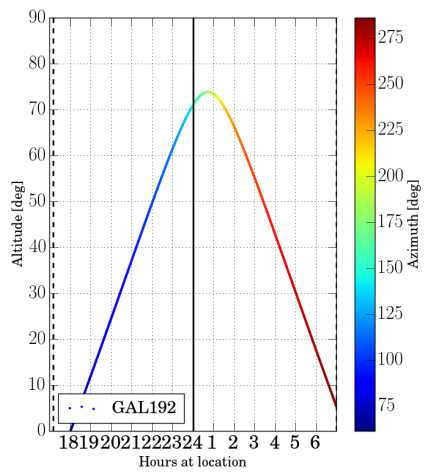
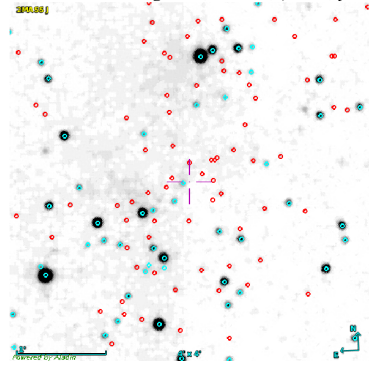


Figure 9: MPIA targets.



2MASS – 2MASS-PSC mag >16 (red/faint) ; < 16(cyan/bright)



SDSS9 – USNO-B1 mag >16 (red/faint) ; < 16(cyan/bright)

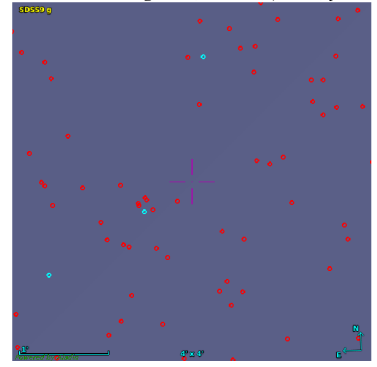


Figure 10: (*con't*)MPIA targets.

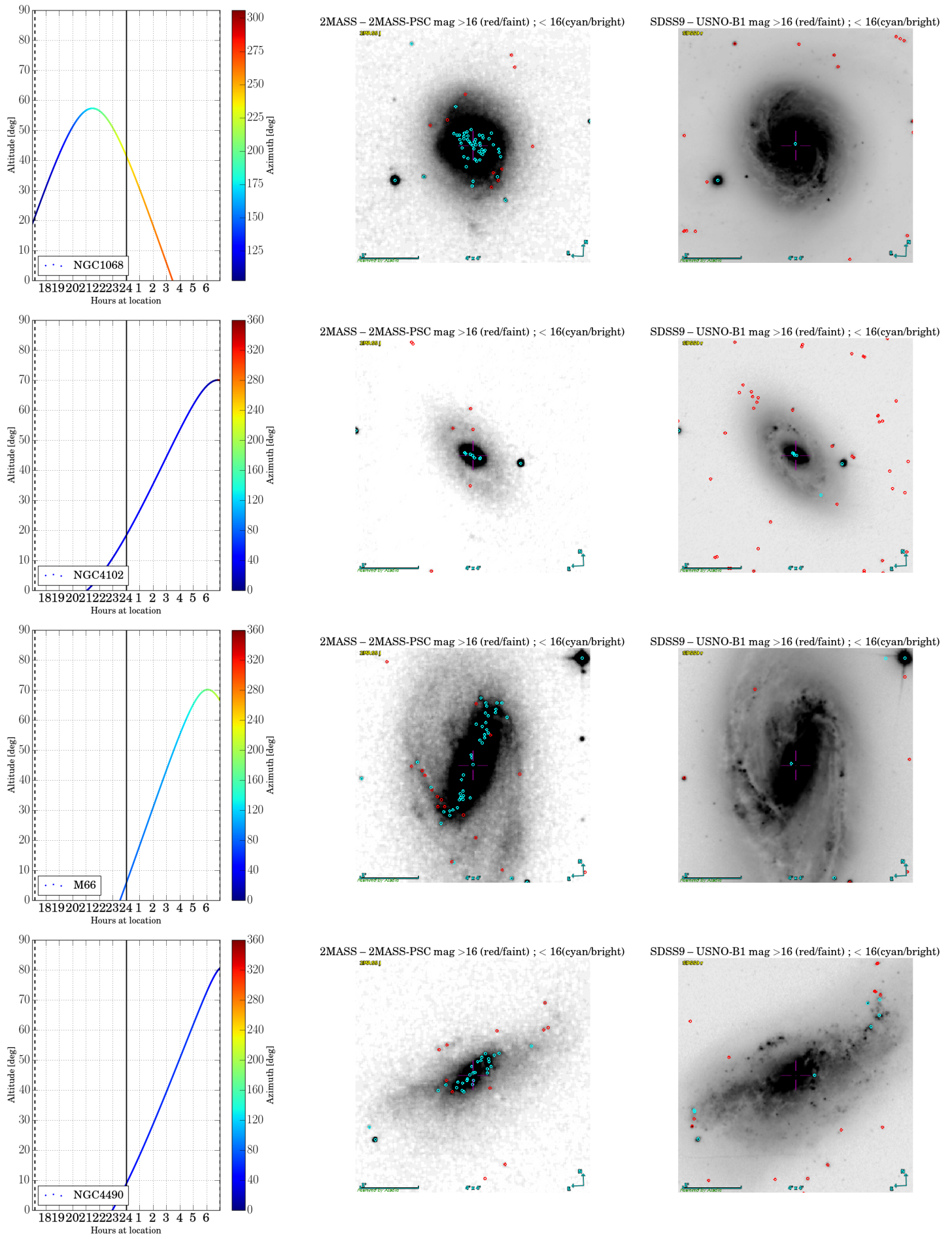


Figure 11: INAF targets.

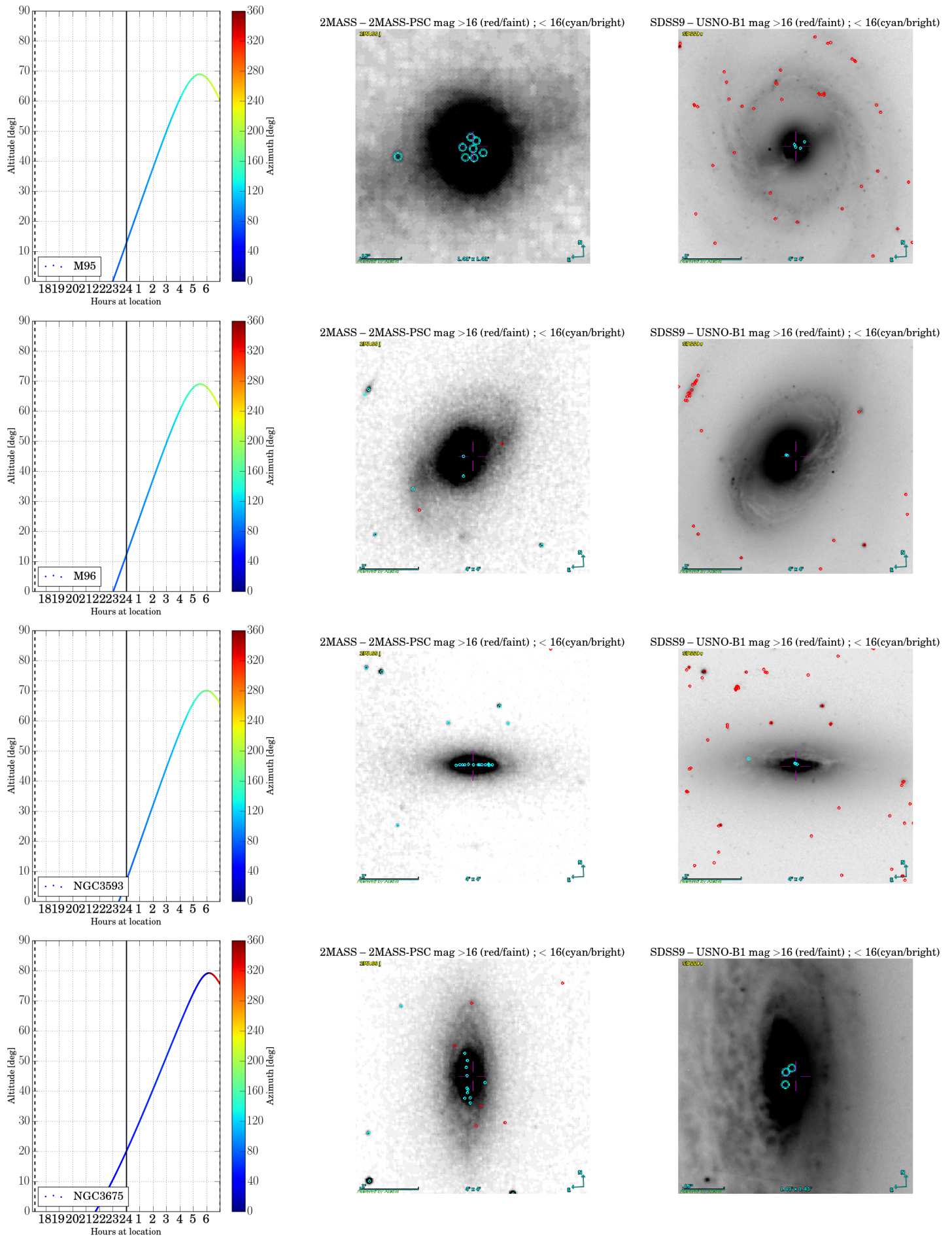


Figure 12: (*con't*) INAF targets.