

# ARGOS May 2016 Impressions



NGC 9646

Cube mount feature

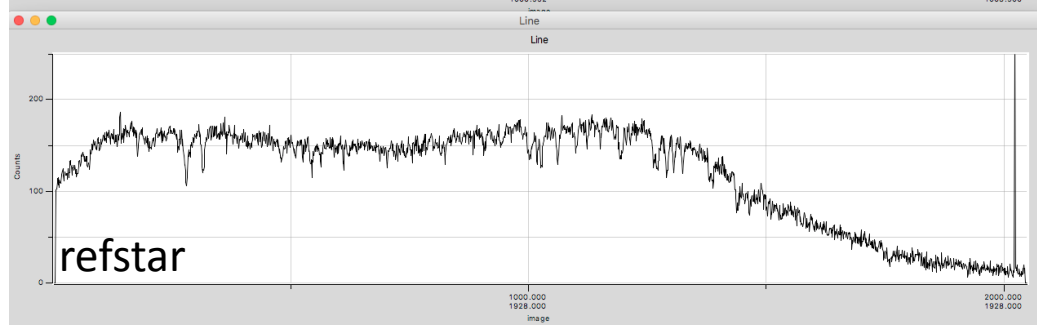
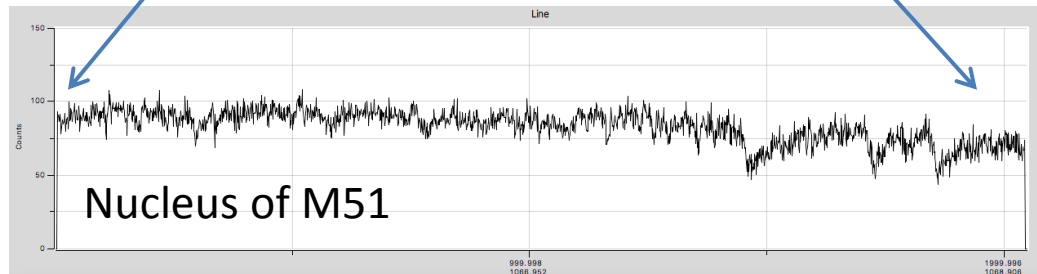


M51



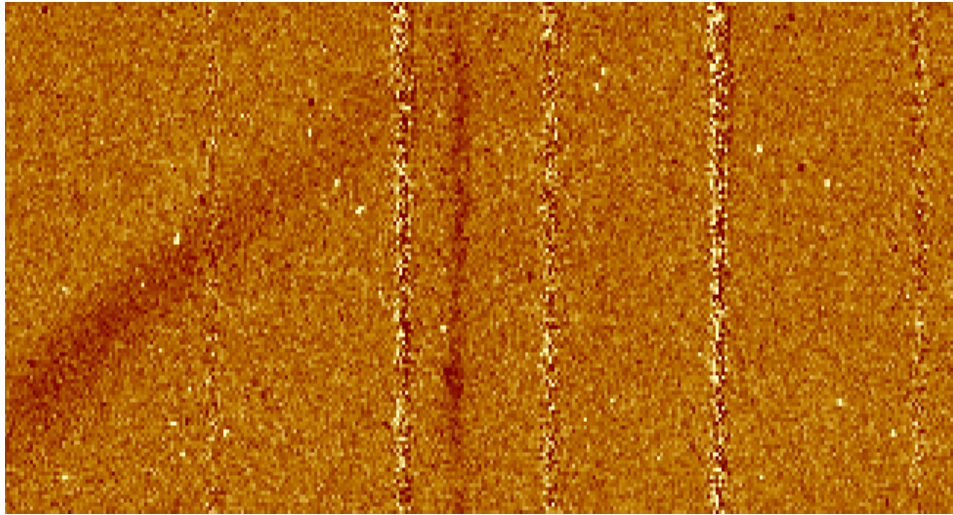
NGC 101

Nearby Galaxies &  
LS spectrum of  
M51 at R~10000

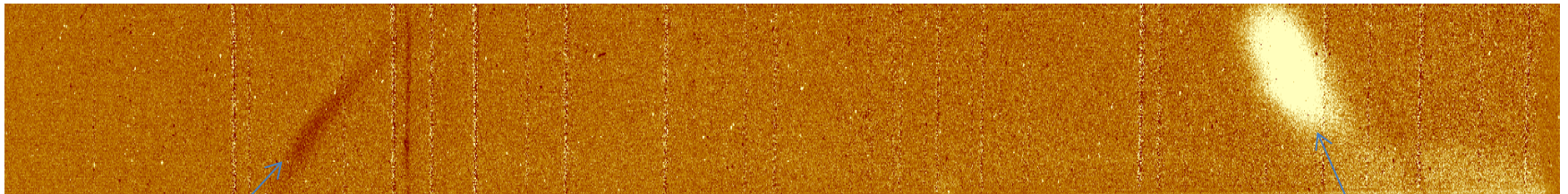


J3433 spectra taken with curved slit along the arc at  $z=2.09$   
0.25" slit G150Ks grating

Halpha

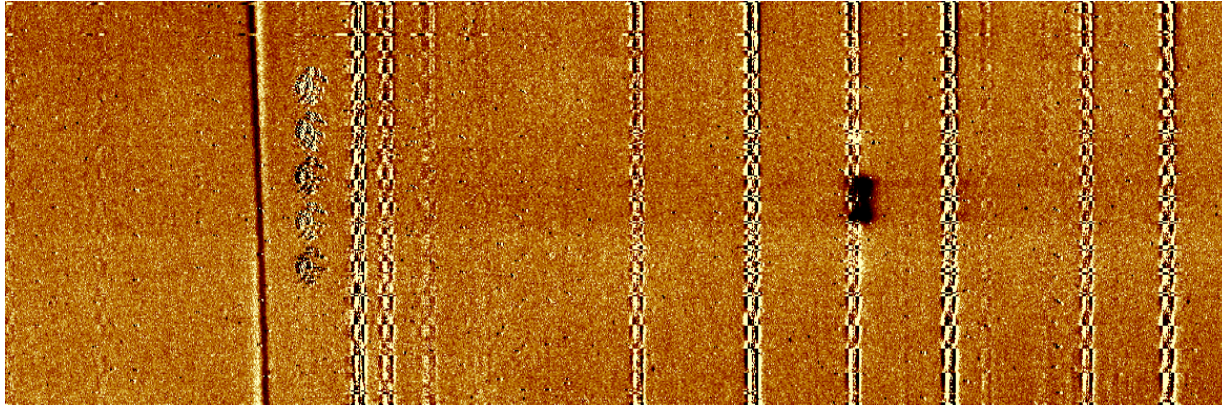


J3433 LuciArgos image March

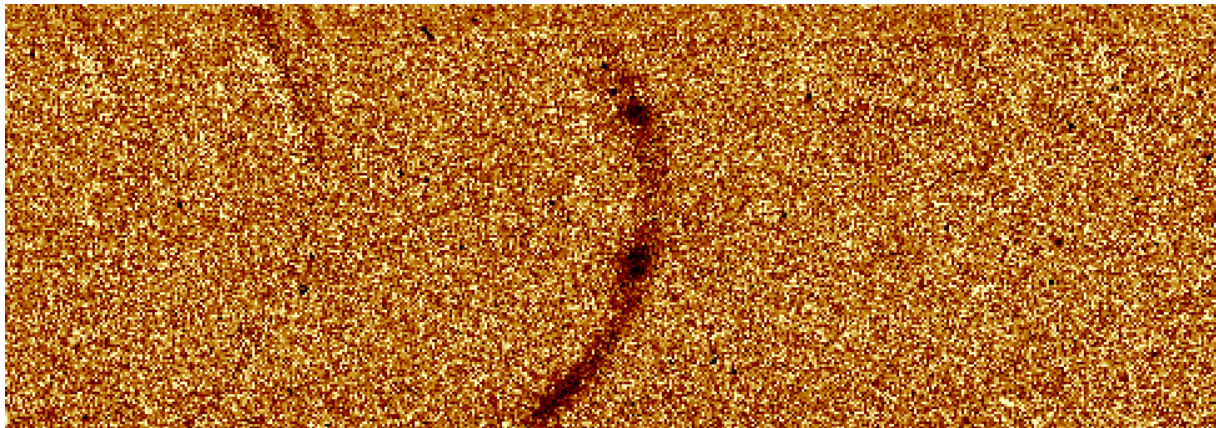


Luci1 feature,  
Difficult to calibrate

Luci1 feature,  
Difficult to calibrate



J1723, lensed galaxy with  $z=1.3$ , LS 0.5" H-band spectrum, strong H $\alpha$  emission. NII and continuum starts to be visible



Our J1110 lensed galaxy from March at 2.48. Revisited and increased the signal to noise at the H $\alpha$  line.