

8am: start unpacking

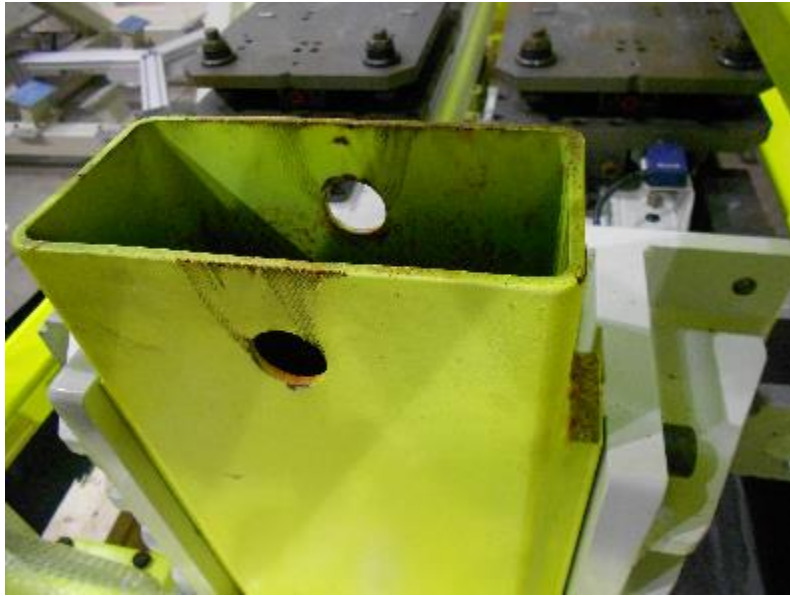
Giovanni and Marco take care of optics and cells box, material stored in clean room

LBT crew takes care of dichroic mount box



First visual inspection of the mounts

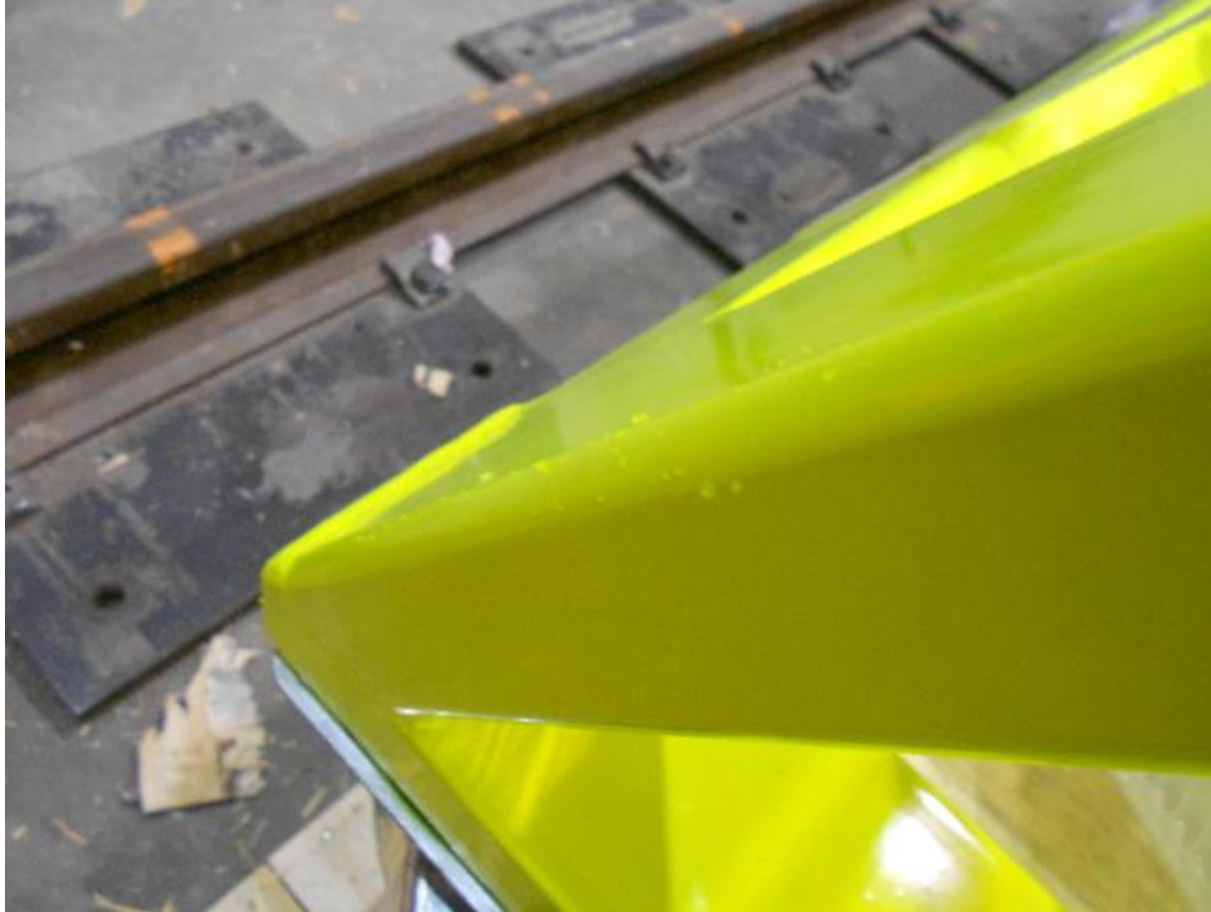
Rust:



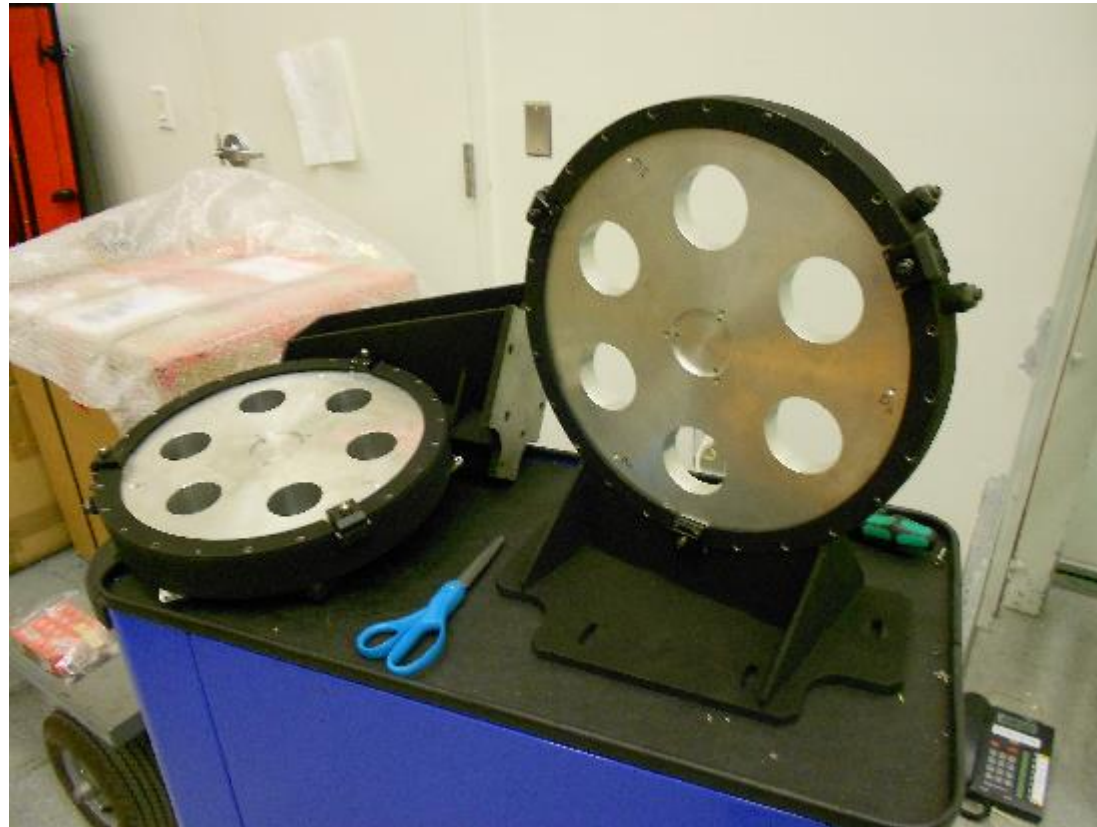
White powder on plastic and stainless steel parts:



Condensation evidence



9am: DX cells are ready with dummies in clean room



In high bay mounts unpacking goes on

1. Tilting stand lifted out
2. Static stand and dichroics lifted out (no handling tool have been required)
3. The dichroic controller wasn't shipped in the box: we have to move the fold mirror manually!



Mold found on the wooden parts that where inside the barrier sack



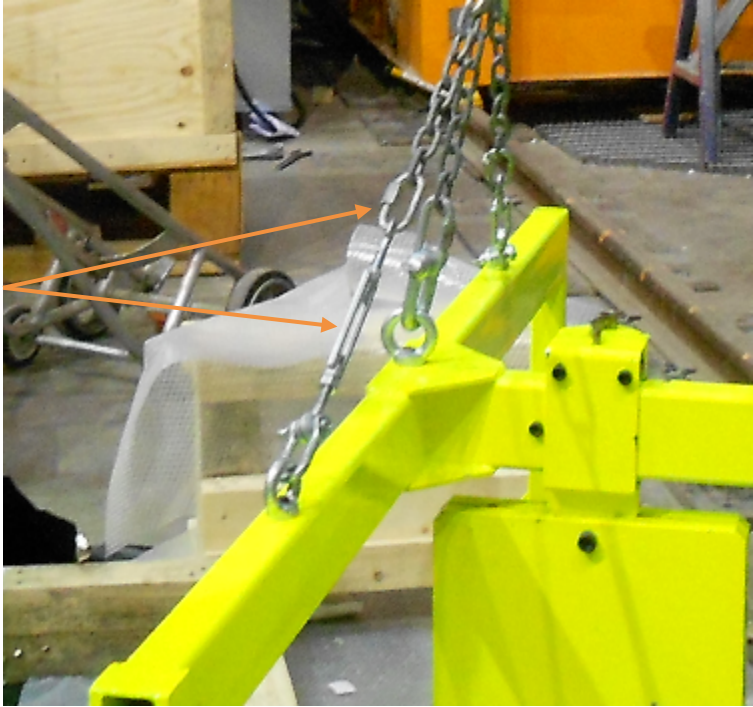
10:30am: handling tool hanged to the crane



10:45am: DX mount hanged to the crane and moved to tilting stand



11am: handling tool made legal



Illegal in US



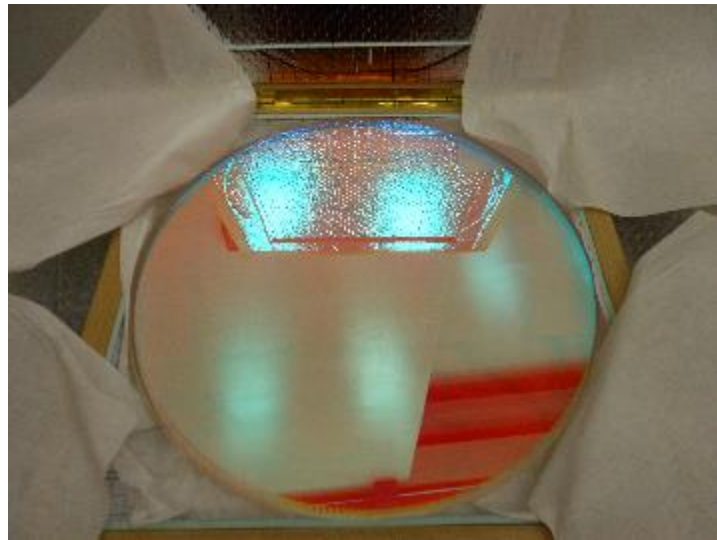
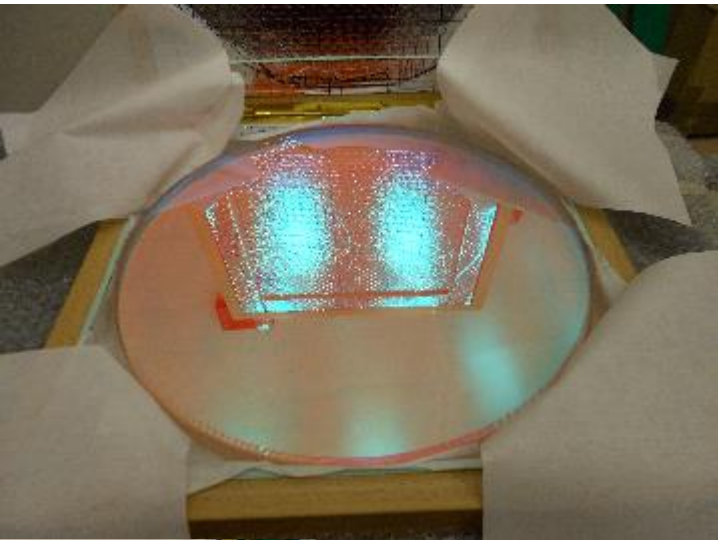
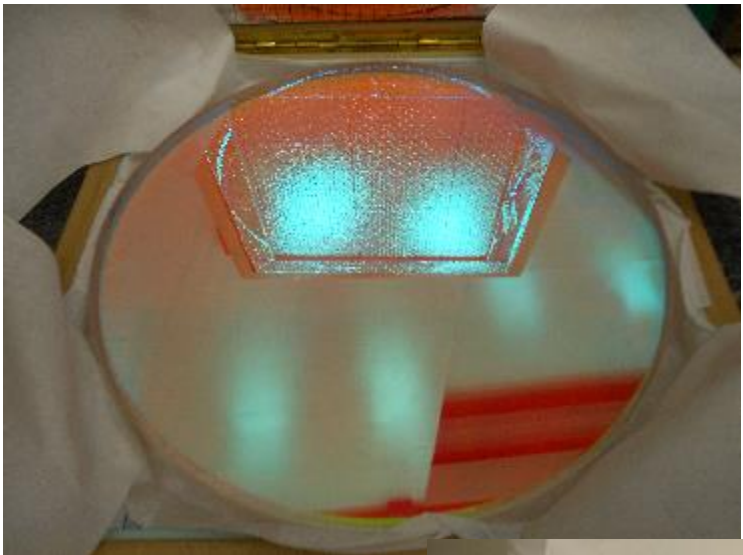
11:10am: SX mount stored in high bay



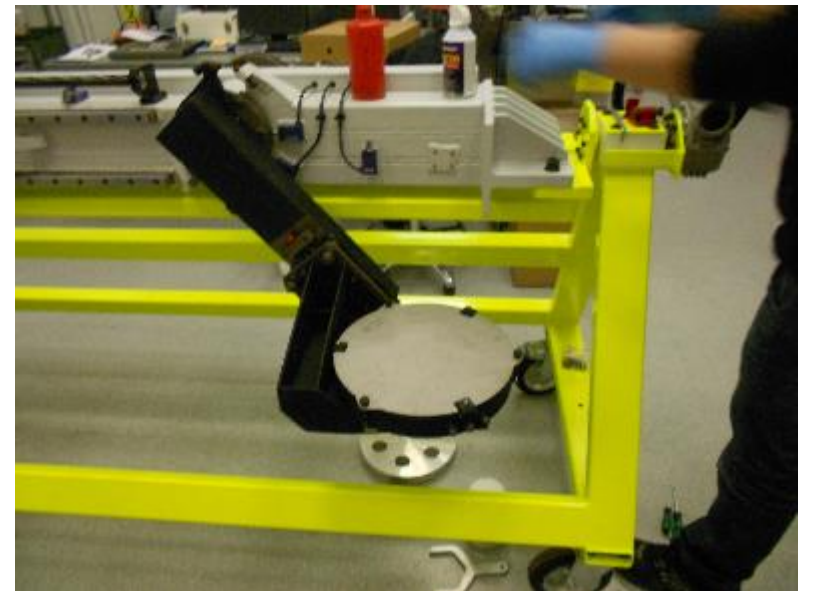
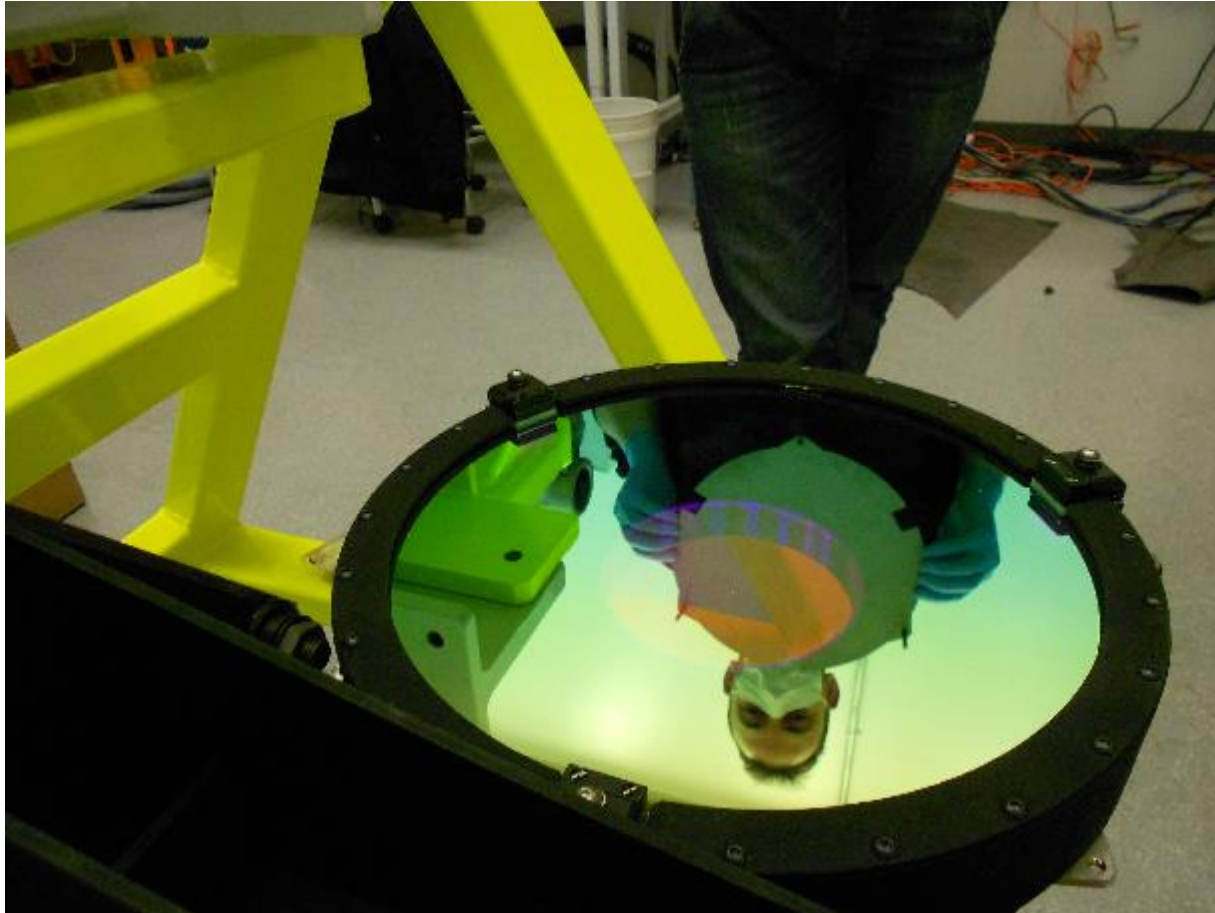
11:20am: DX mount in clean room



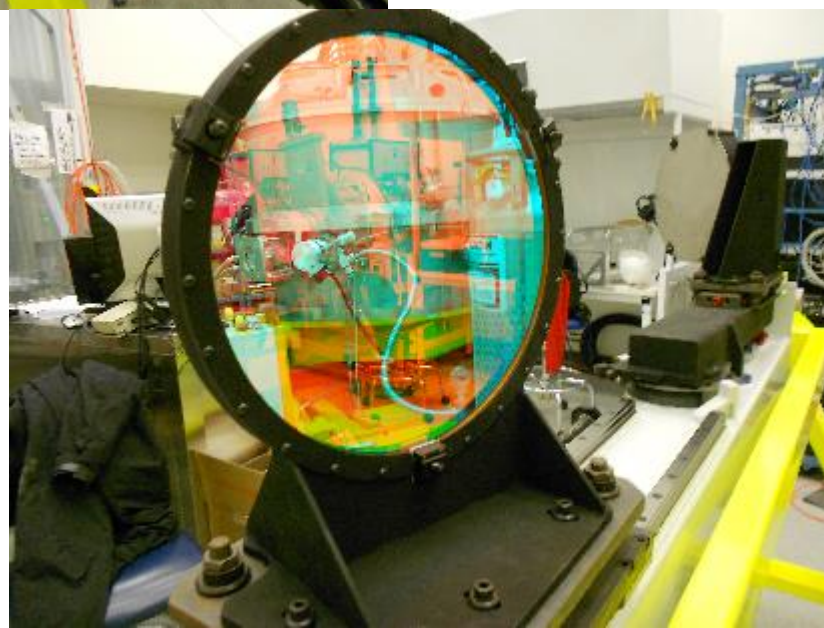
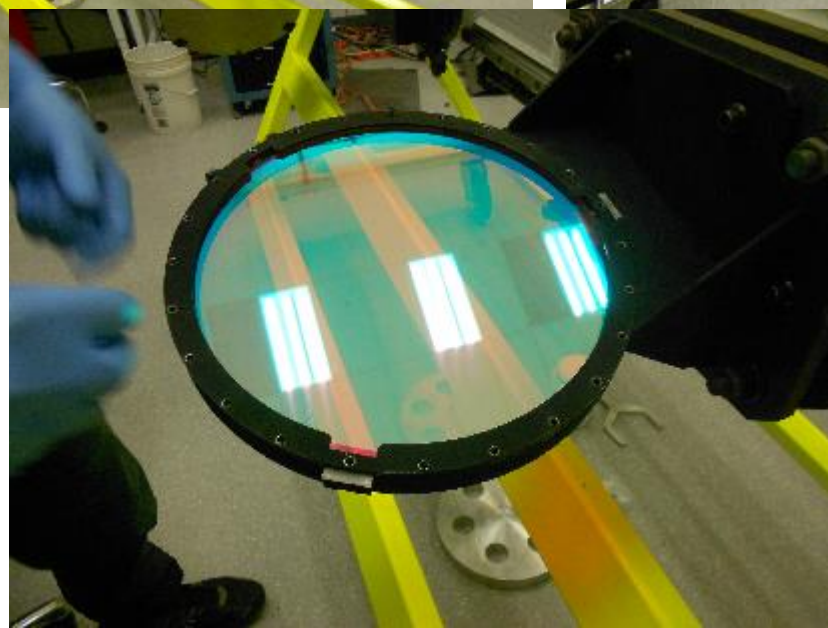
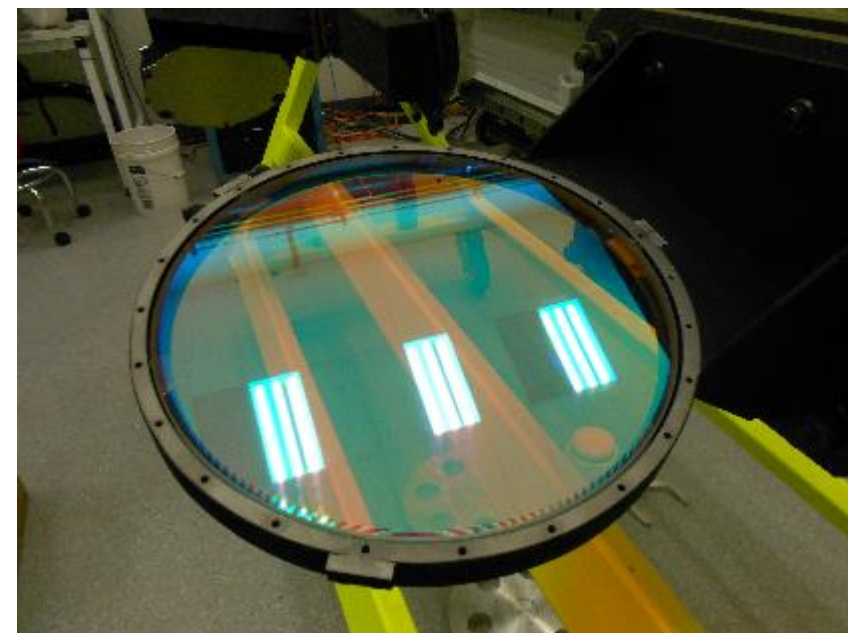
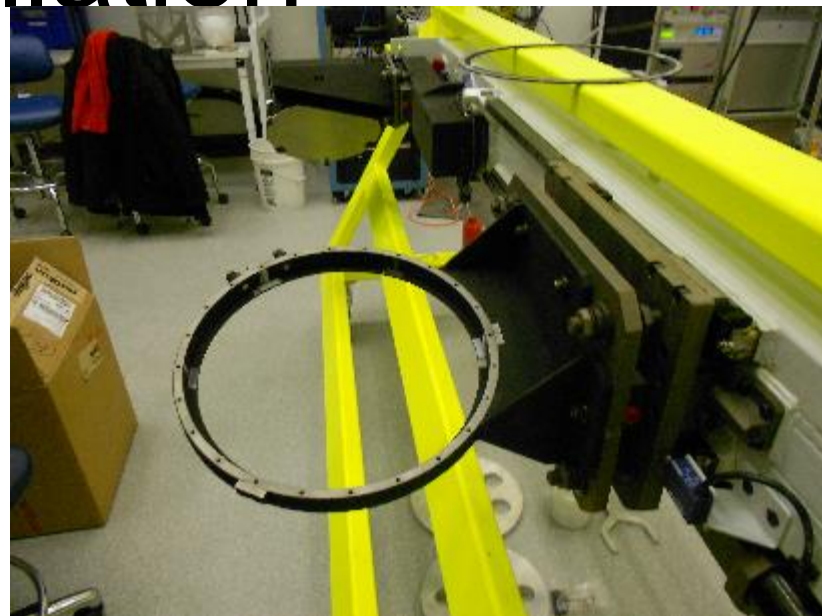
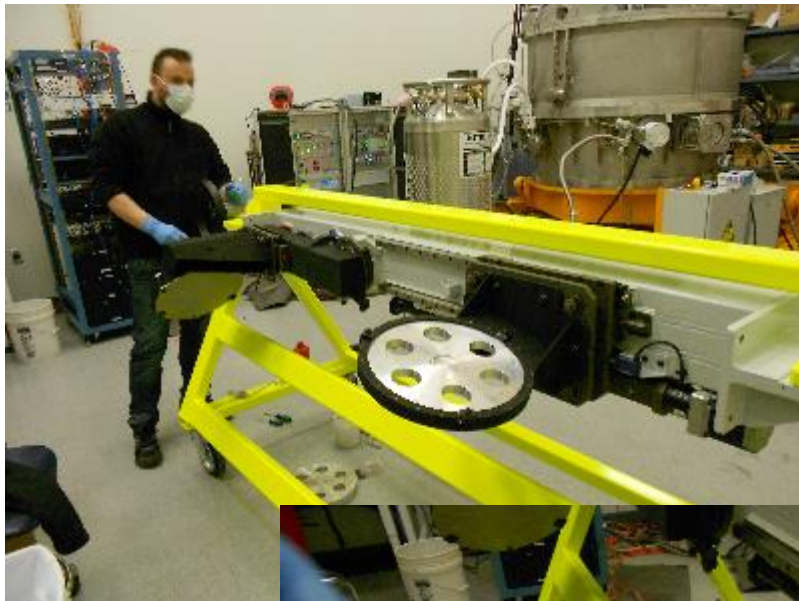
Visual inspection of the optics shows no coating degradation



12am: fold mirror installed (with cover)



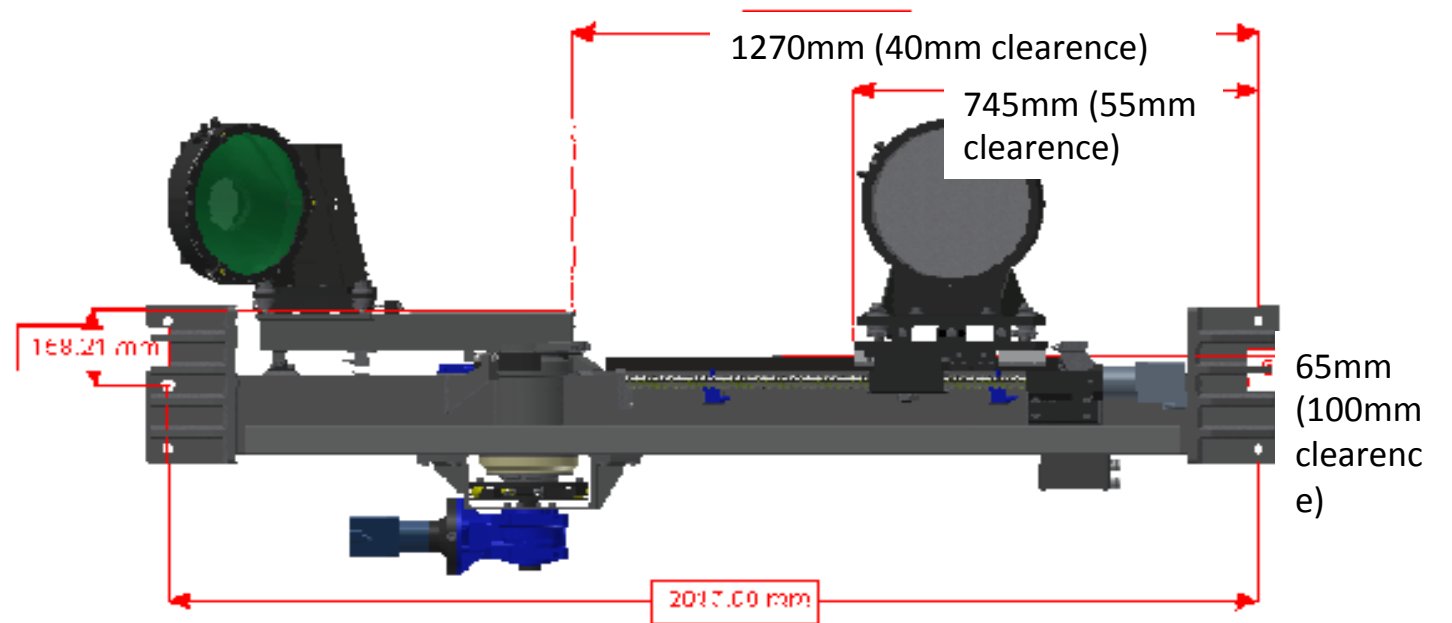
Dichroic installation



1pm: DX mount completely assembled in clean room



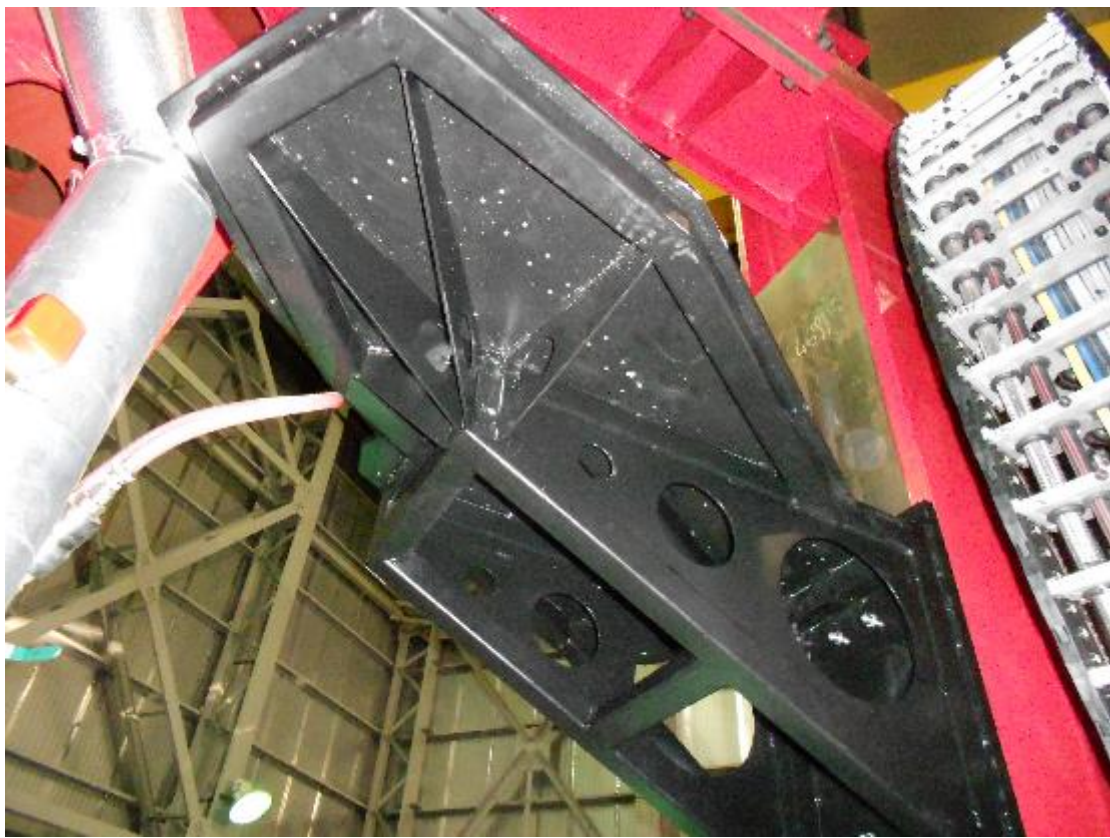
2pm: measuring DX LUCI cal unit position wrt dichroic interfaces



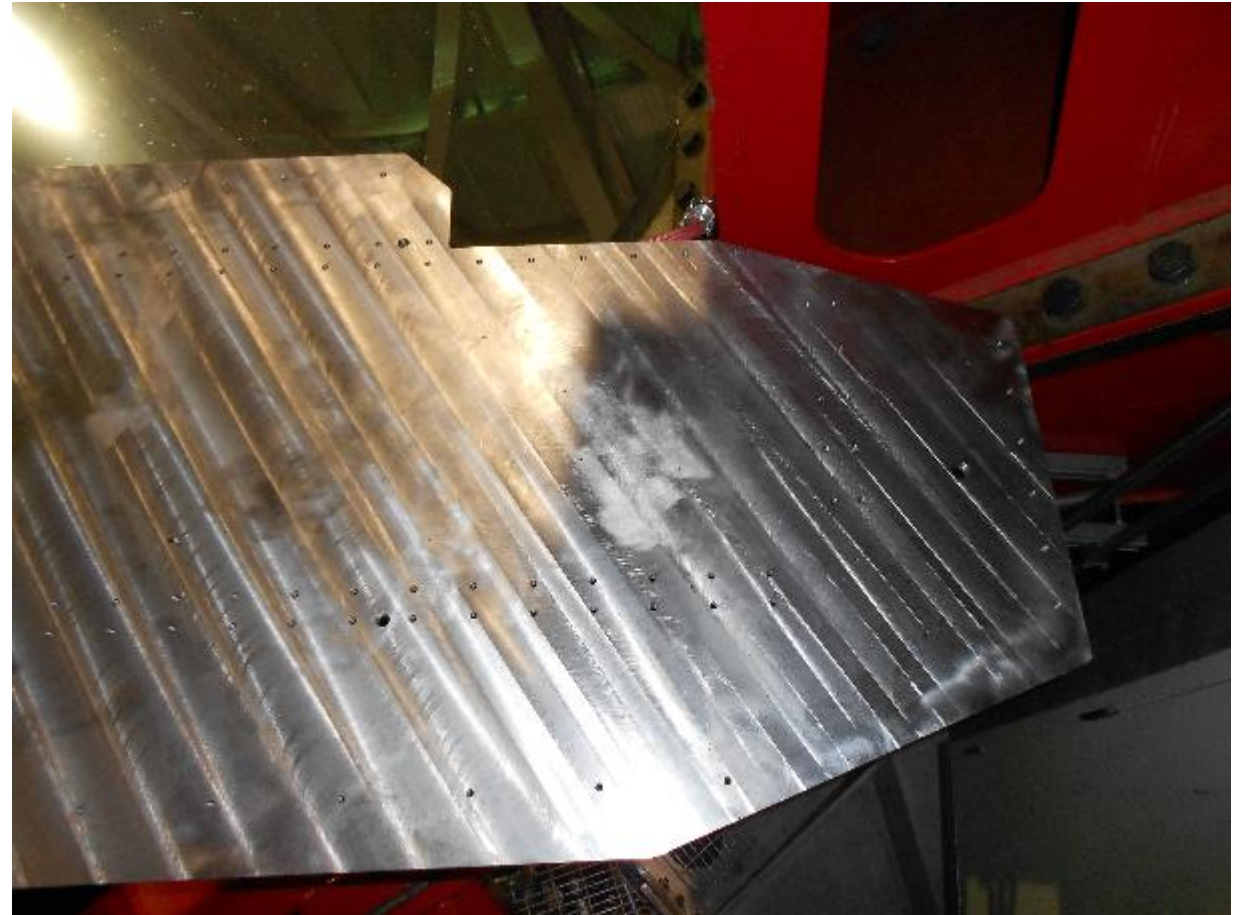
- LUCI cal unit can be manually deployed by LBT crew on instrument gallery
- Emergency stop works
- Deployment can be aborted and resumed



DX LGSW table inspection



SX table (3:30pm must leave dome area)



4-6pm: activity in clean room

- DX mount cleaned
- Installed aluminium plate for cables color code