

Date 03.07.2013
 Drawn J. Ziegler
 Checked
 Approved

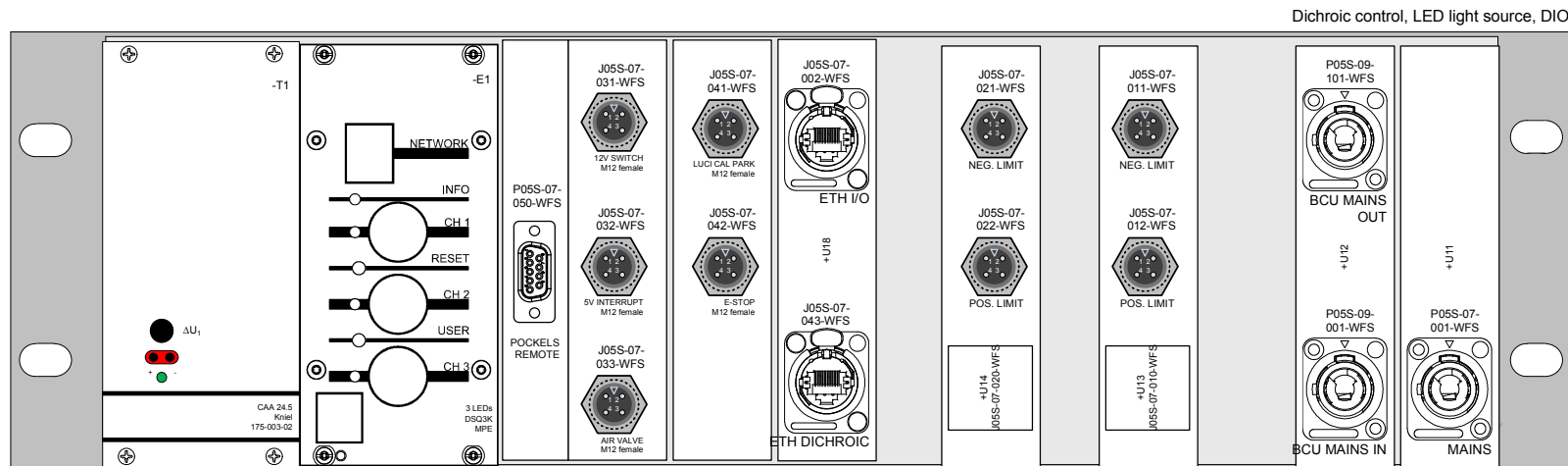


Max Planck Institut für extraterrestrische Physik
 Giessenbachstrasse
 D-85748 Garching



Dichroic, LED & Aux. Control SX
 Front

CAN NO:	652g910	Rev.	-
+ARGOS+WFS+WFS_SXRack SXDichroic control, LED light source, DIO		Sheet	1
		of	14



12TE

12TE

+U17

+U15

+U16

+U14

+U13

Dichroic control, LED light source, DIO

Date	03.07.2013
Drawn	J. Ziegler
Checked	
Approved	



Max Planck Institut für extraterrestrische Physik
Giessenbachstrasse
D-85748 Garching



Dichroic, LED & Aux. Control SX
Rear

CAN NO:	652g910	Rev.	-
		Sheet	2
		of	14

ARGOS LBT Laser Guide Star +ARGOS+WFS+WFS_SXRack SXDichroic control, LED light source, DIO



Date	03.07.2013
Drawn	J. Ziegler
Checked	
Approved	



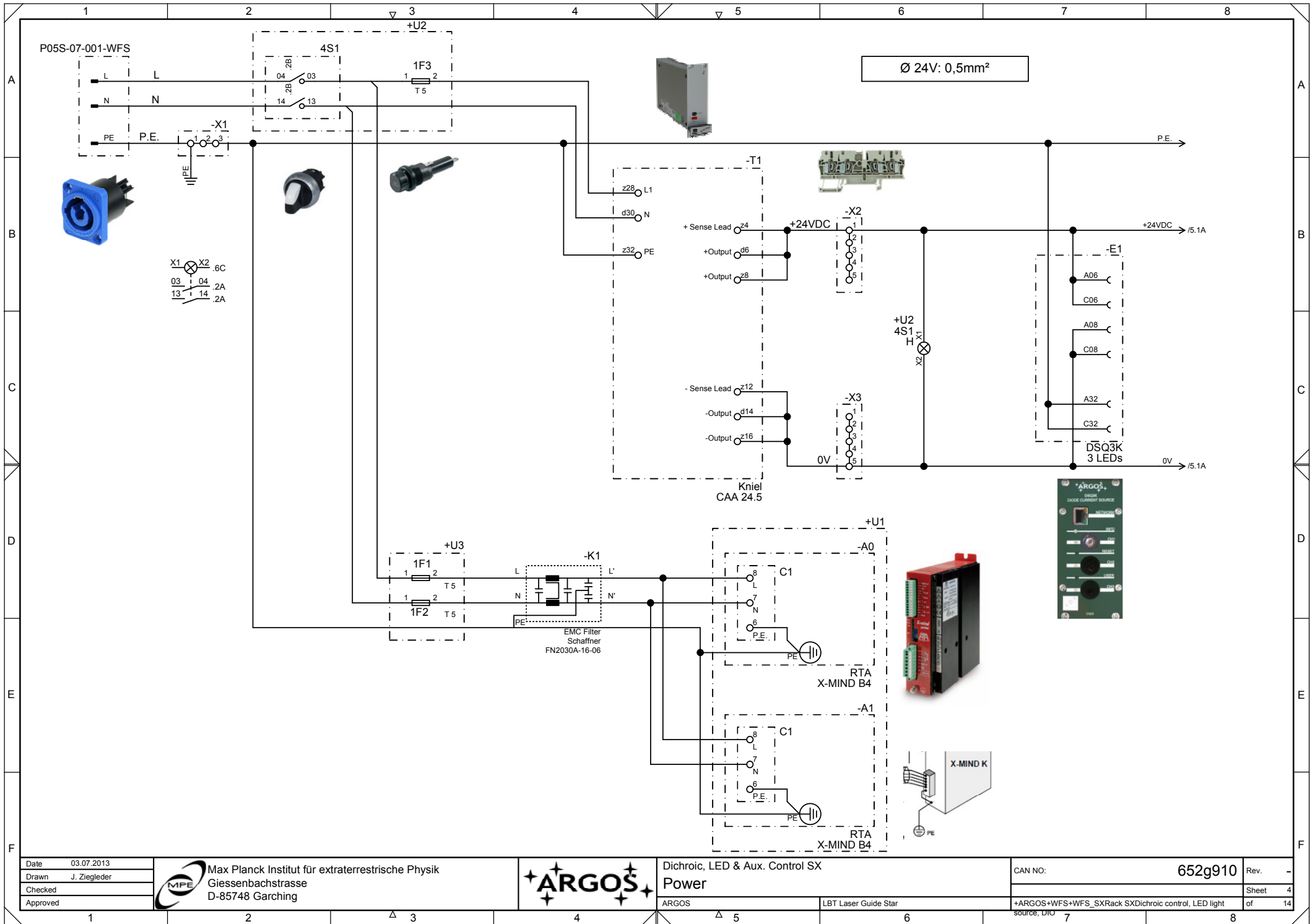
Max Planck Institut für extraterrestrische Physik
 Giessenbachstrasse
 D-85748 Garching




Dichroic, LED & Aux. Control SX
 Internal layout

CAN NO:	652g910	Rev.	-
		Sheet	3
		of	14

ARGOS LBT Laser Guide Star +ARGOS+WFS+WFS_SXRack SXDichroic control, LED light source, DIO



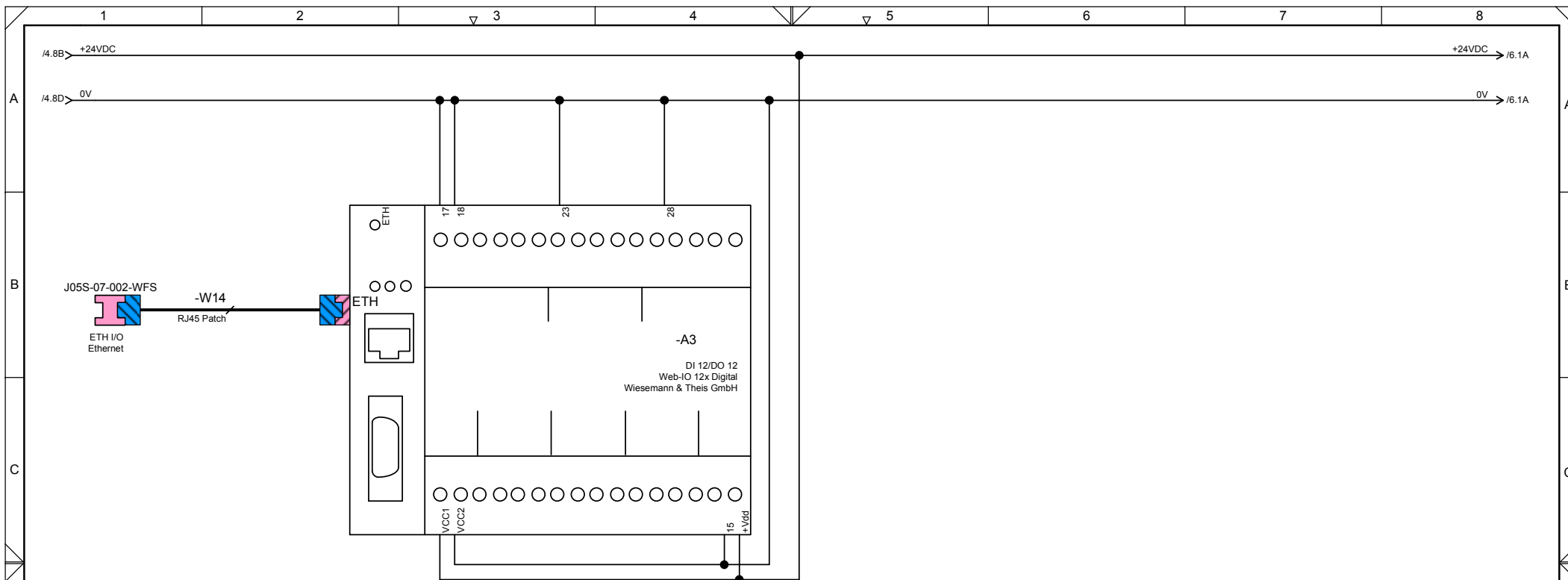
Date	03.07.2013
Drawn	J. Ziegler
Checked	
Approved	


Max Planck Institut für extraterrestrische Physik
 Giessenbachstrasse
 D-85748 Garching



Dichroic, LED & Aux. Control SX
Power
 ARGOS


CAN NO:	652g910	Rev.	-
+ARGOS+WFS+WFS_SXRack SXDichroic control, LED light source, DIO		Sheet	4
		of	14



/11.3B	I0	LUCI Cal
/11.3C	I1	E-STOP
	I2	I2
/13.4B	I3	HV ERROR
	I4	I4
	I5	I5
/9.4E	I6	FAULT 0
/9.4E	I7	BUSY 0
/9.4E	I8	O0 0
/10.4E	I9	FAULT 1
/10.4E	I10	BUSY 1
/10.4E	I11	O0 1

/12.1C	Out0	BCU INTERRUPT
/12.1A	Out1	12V SWITCH
/12.1B	Out2	5V INTERRUPT
/13.4B	Out3	HV ON
/13.4B	Out4	HV RESET
/12.1B	Out5	AIR VALVE
	Out6	O6
	Out7	O7
	Out8	O8
	Out9	O9
	Out10	O10
	Out11	O11

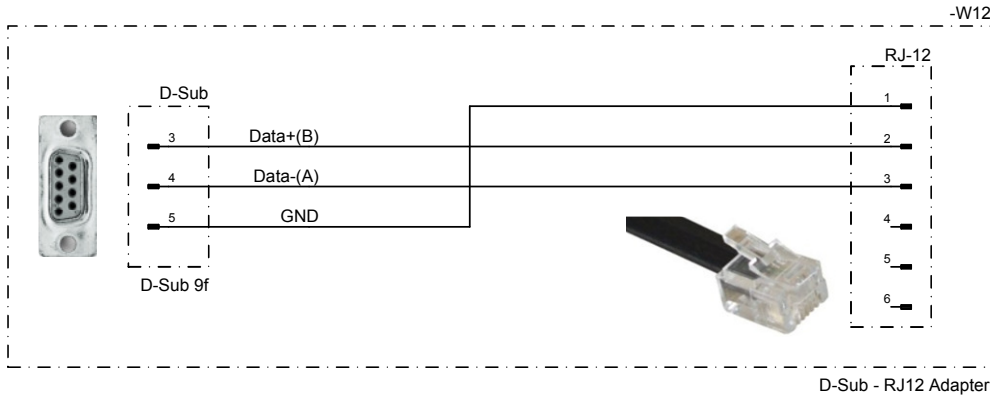
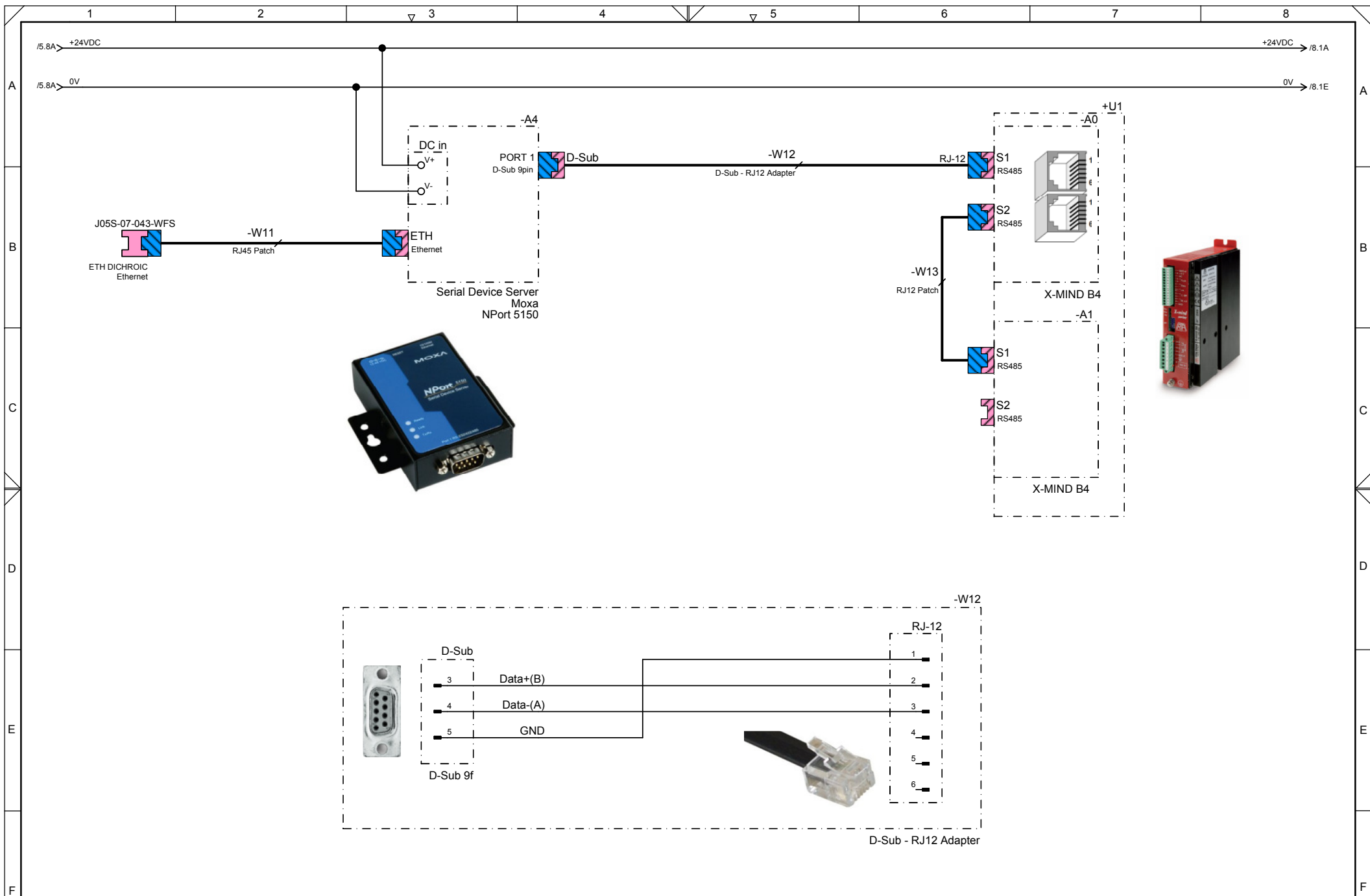
Date 03.07.2013
 Drawn J. Ziegler
 Checked
 Approved

 Max Planck Institut für extraterrestrische Physik
 Giessenbachstrasse
 D-85748 Garching




Dichroic, LED & Aux. Control SX
 Digital I/O
 ARGOS

CAN NO: 652g910 Rev. -
 Sheet 5
 +ARGOS+WFS+WFS_SXRack SXDichroic control, LED light of 14
 source, DIO



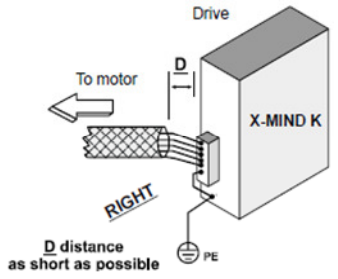
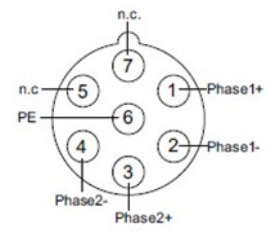
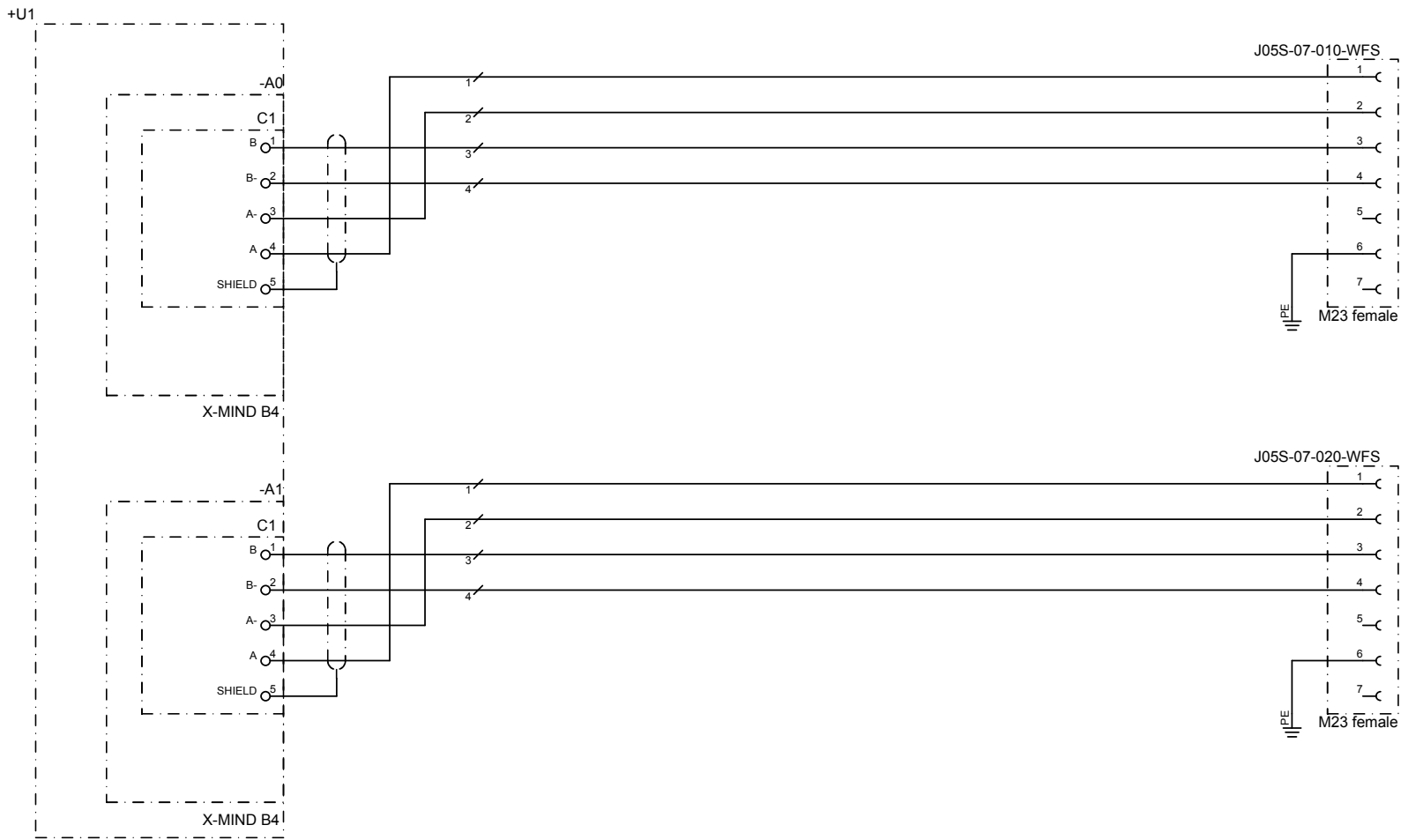
Date	03.07.2013
Drawn	J. Ziegler
Checked	
Approved	


Max Planck Institut für extraterrestrische Physik
 Giessenbachstrasse
 D-85748 Garching




Dichroic, LED & Aux. Control SX
Serial device server
 ARGOS

CAN NO:	652g910	Rev.	-
		Sheet	6
+ARGOS+WFS+WFS_SXRack SXDichroic control, LED light source, DIO		of	14



Date	03.07.2013
Drawn	J. Ziegler
Checked	
Approved	


 Max Planck Institut für extraterrestrische Physik
 Giessenbachstrasse
 D-85748 Garching

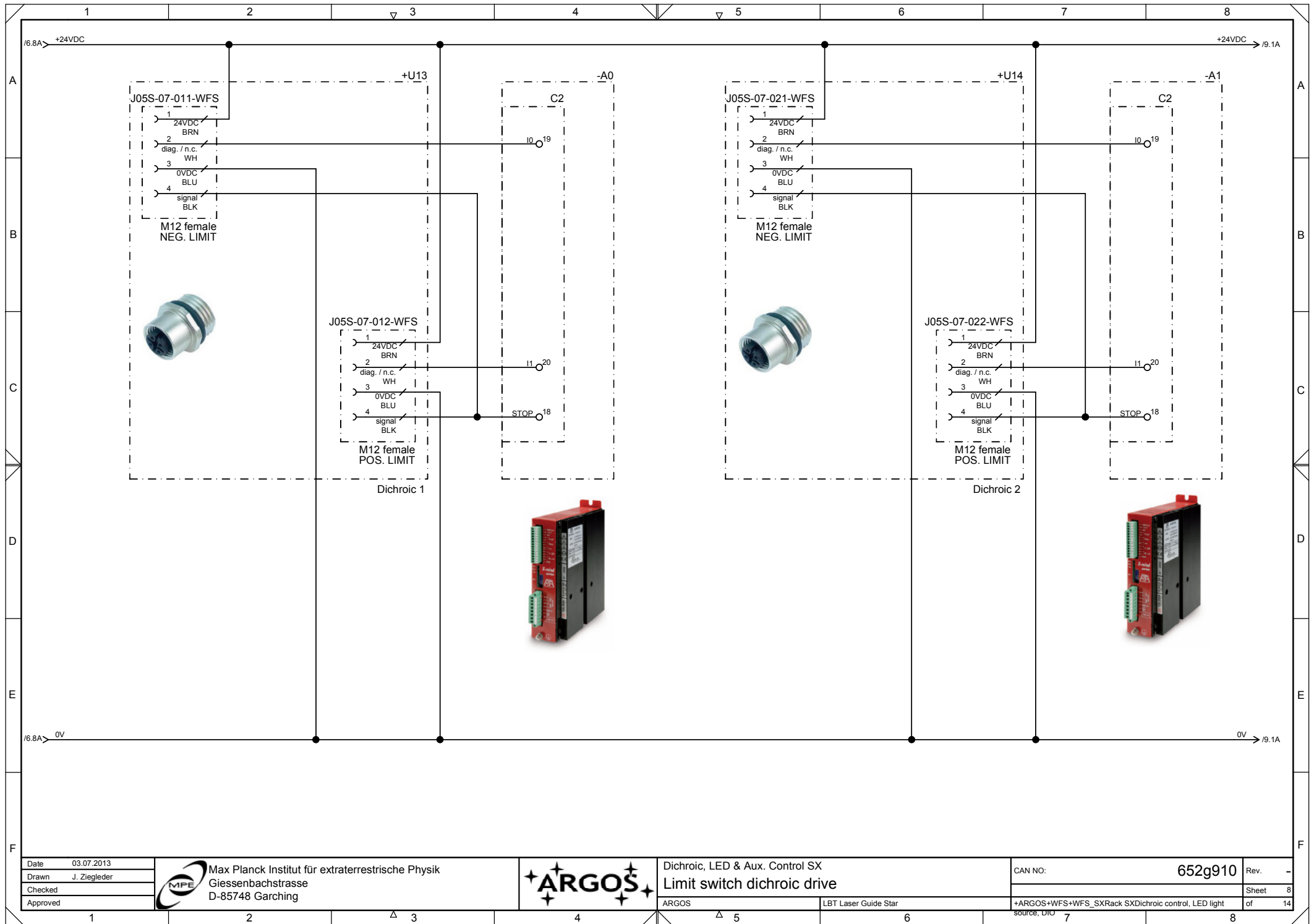


Dichroic, LED & Aux. Control SX
 Dichroic motor controller output

ARGOS

LBT Laser Guide Star

CAN NO:	652g910	Rev.	-
		Sheet	7
+ARGOS+WFS+WFS_SXRack SXDichroic control, LED light source, DIO		of	14



Date	03.07.2013
Drawn	J. Ziegler
Checked	
Approved	



Max Planck Institut für extraterrestrische Physik
 Giessenbachstrasse
 D-85748 Garching



Dichroic, LED & Aux. Control SX
 Limit switch dichroic drive

ARGOS

LBT Laser Guide Star

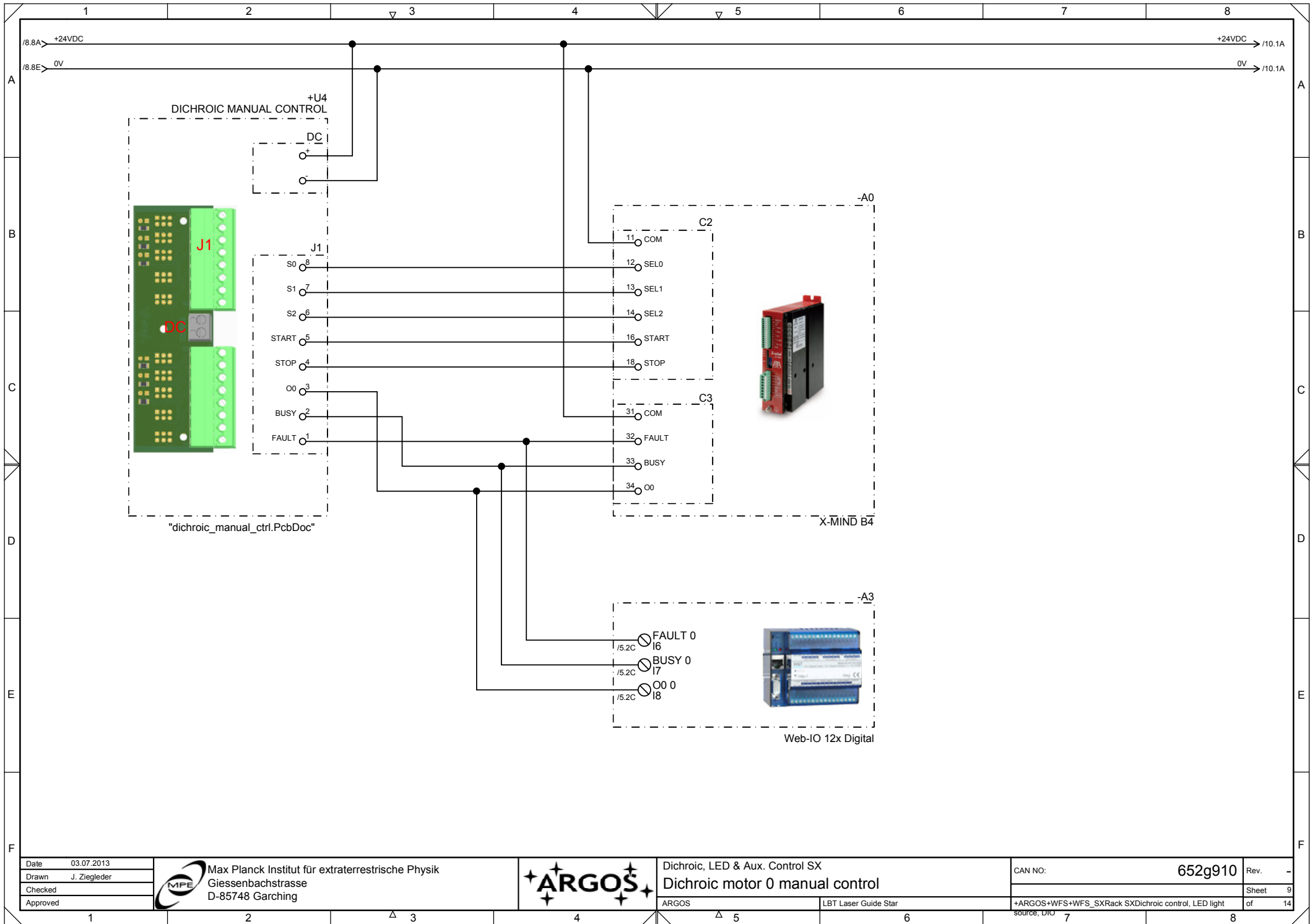
CAN NO:

652g910


Rev. -

Sheet 8

+ARGOS+WFS+WFS_SXRack SXDichroic control, LED light source, DIO of 14



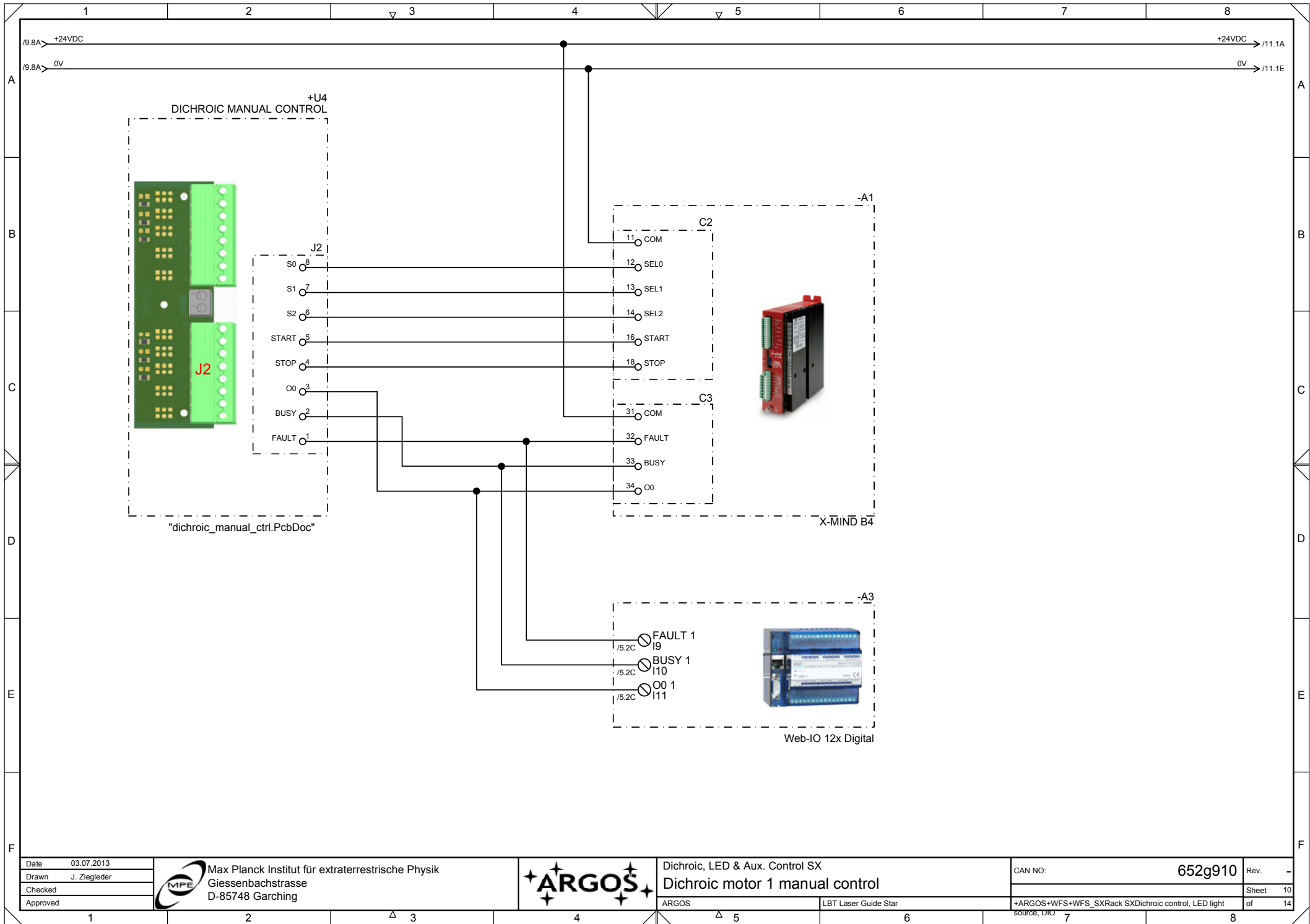
Date 03.07.2013
 Drawn J. Ziegler
 Checked
 Approved

 Max Planck Institut für extraterrestrische Physik
 Giessenbachstrasse
 D-85748 Garching




Dichroic, LED & Aux. Control SX
 Dichroic motor 0 manual control
 ARGOS LBT Laser Guide Star

CAN NO: 652g910 Rev. -
 Sheet 9 of 14
 +ARGOS+WFS+WFS_SXRack SXDichroic control, LED light source, DIO 7



Date	03.07.2013
Drawn	J. Ziegler
Checked	
Approved	

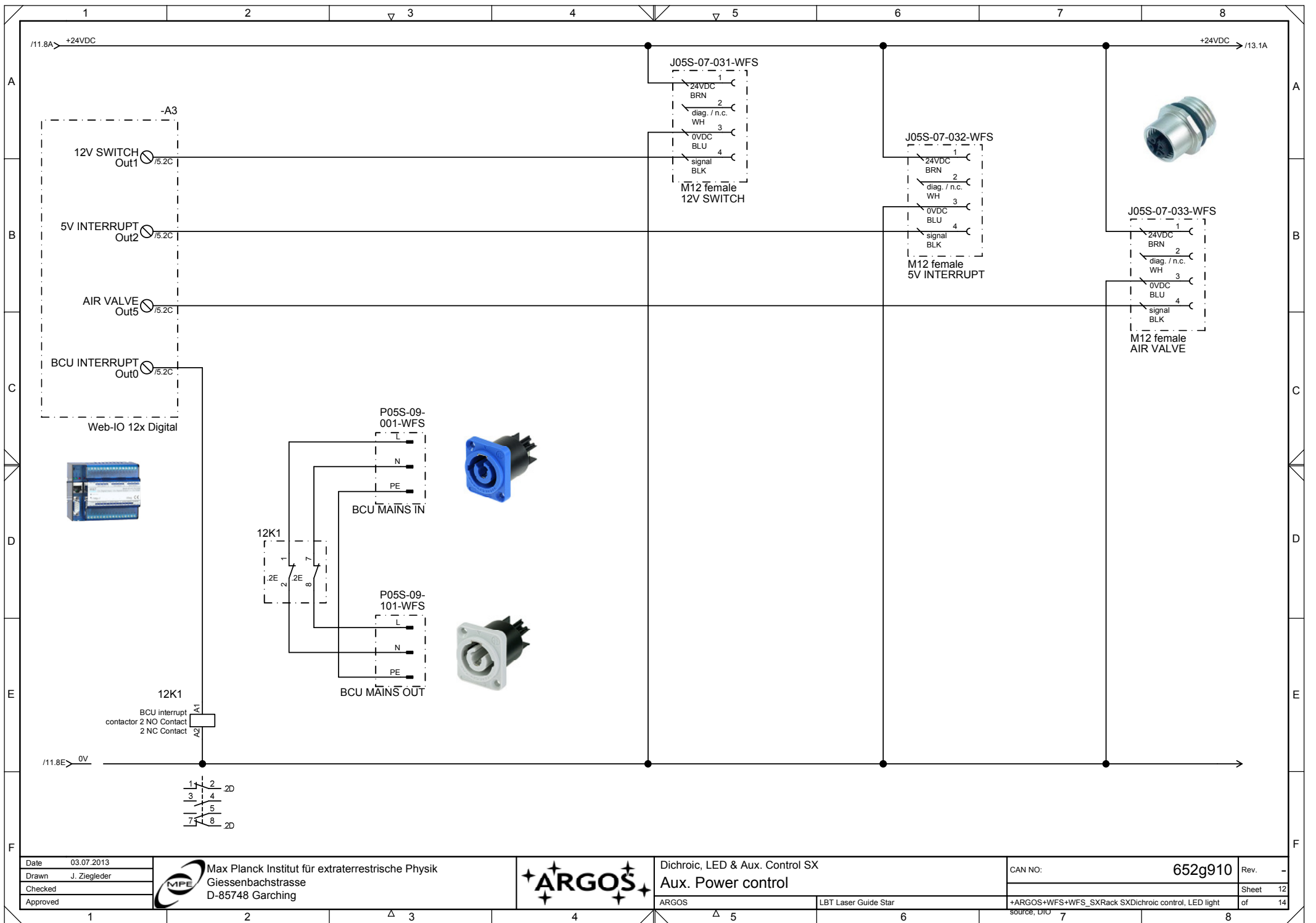

 Max Planck Institut für extraterrestrische Physik
 Giessenbachstrasse
 D-85748 Garching




Dichroic, LED & Aux. Control SX
 Dichroic motor 1 manual control
 ARGOS

LBT Laser Guide Star

CAN NO:	652g910	Rev.	-
+ARGOS+WFS+WFS_SXRack SXDichroic control, LED light		Sheet	10
source: DIO		of	14



Date	03.07.2013
Drawn	J. Ziegler
Checked	
Approved	


Max Planck Institut für extraterrestrische Physik
 Giessenbachstrasse
 D-85748 Garching

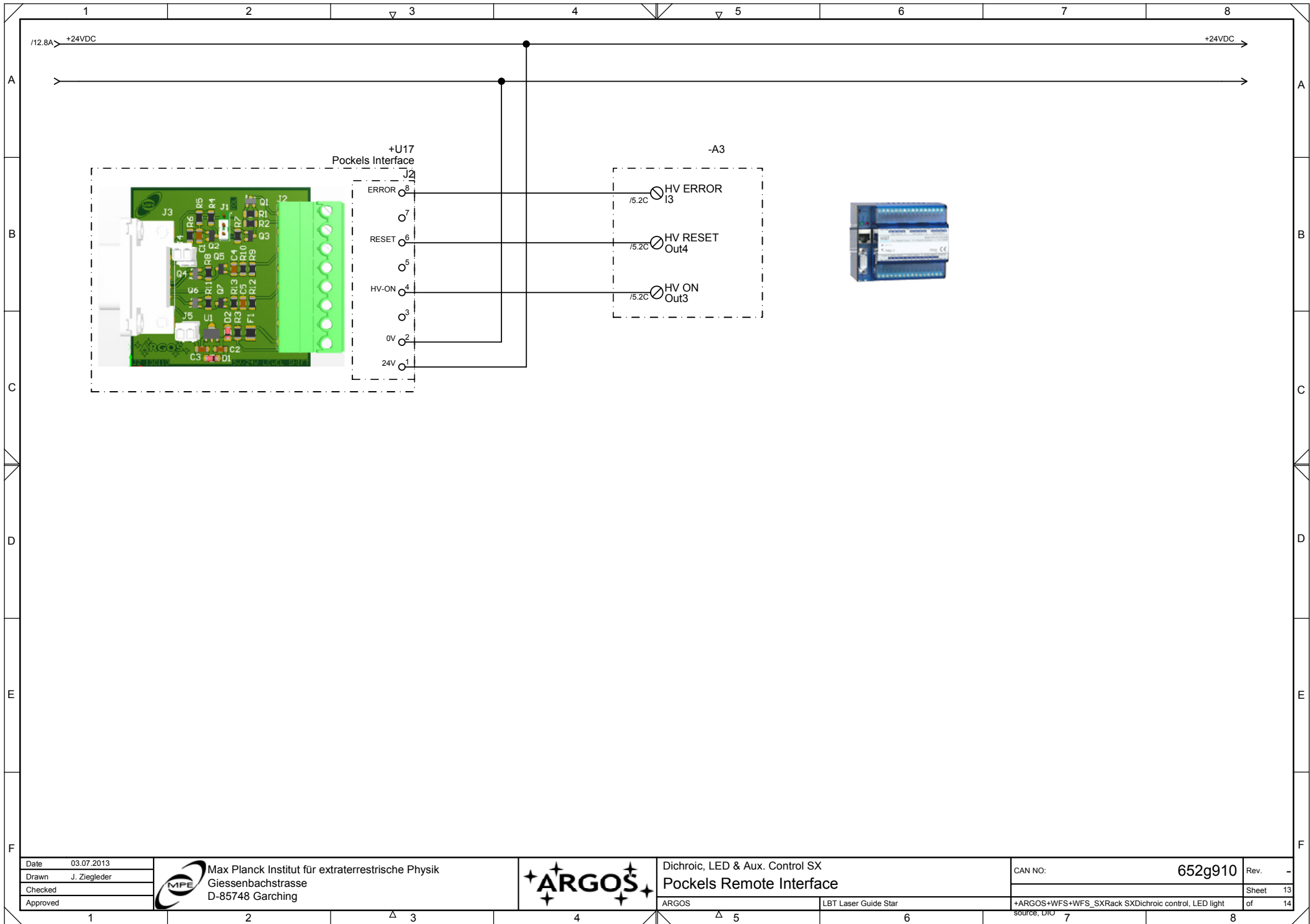


Dichroic, LED & Aux. Control SX
 Aux. Power control

ARGOS LBT Laser Guide Star

CAN NO:	652g910	Rev.	-
		Sheet	12
		of	14

+ARGOS+WFS+WFS_SXRack SXDichroic control, LED light source, DIO



Date	03.07.2013
Drawn	J. Ziegler
Checked	
Approved	



Max Planck Institut für extraterrestrische Physik
 Giessenbachstrasse
 D-85748 Garching



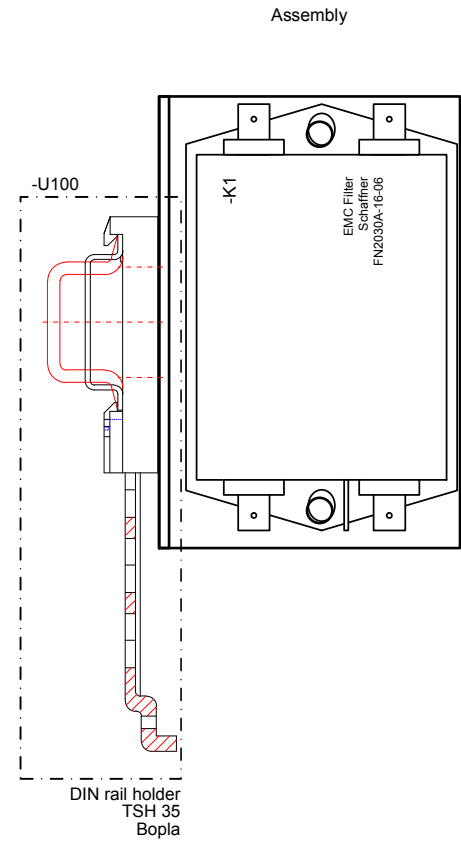
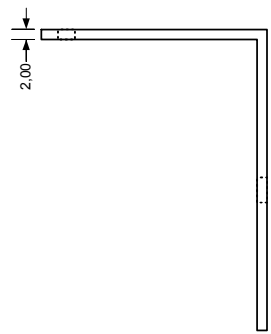
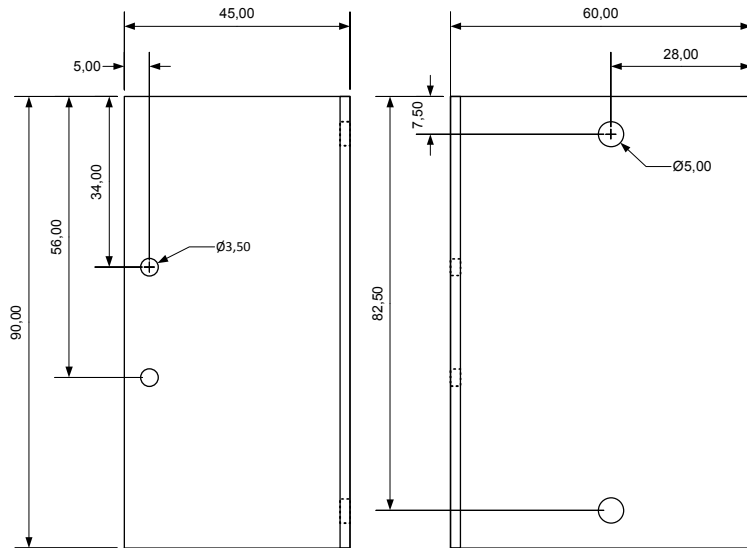
Dichroic, LED & Aux. Control SX
 Pockels Remote Interface

ARGOS


LBT Laser Guide Star

CAN NO:	652g910	Rev.	-
		Sheet	13
		of	14

+ARGOS+WFS+WFS_SXRack SXDichroic control, LED light source, DIO



Date	03.07.2013
Drawn	J. Ziegler
Checked	
Approved	


Max Planck Institut für extraterrestrische Physik
 Giessenbachstrasse
 D-85748 Garching



Dichroic, LED & Aux. Control SX
EMI Filter Mount
 ARGOS

CAN NO:	652g910	Rev.	-
+ARGOS+WFS+WFS_SXRack SXDichroic control, LED light		Sheet	14
source: DIO		of	14