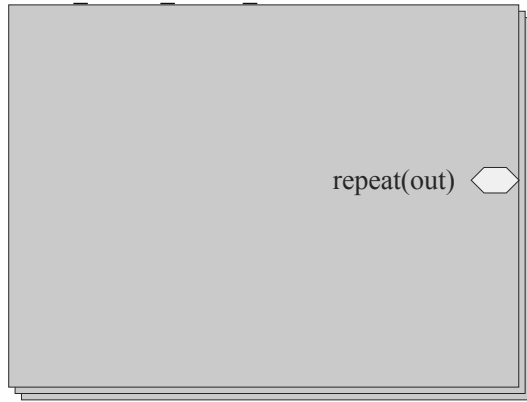

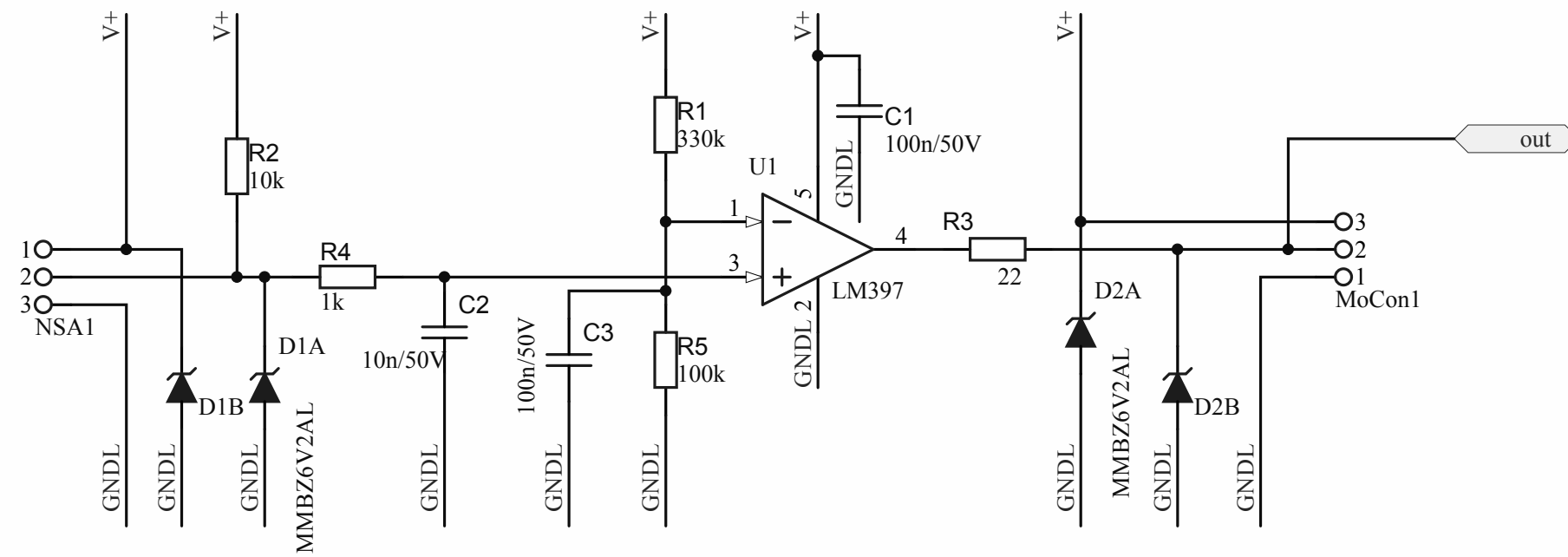



repeat(B,1,4)  
nsa12\_switch\_buffer\_shrink.SchDoc

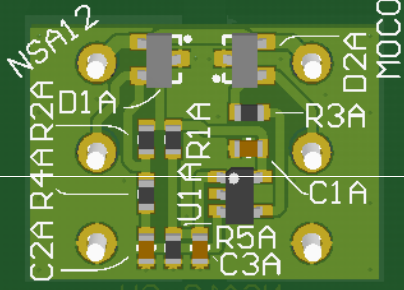
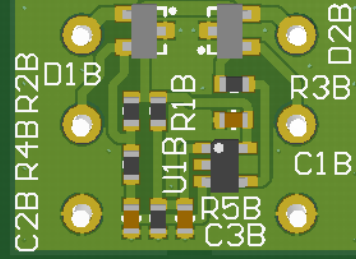
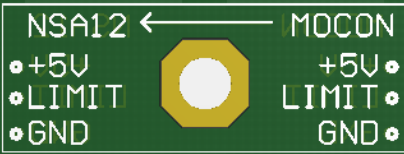
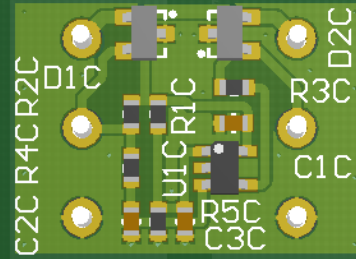
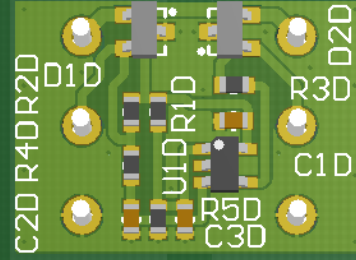


Title		 Max-Planck-Institut für extraterrestrische Physik Giessenbachstrasse 85748 Garching, Germany Germany	
Project			
Size: A4	Document Number:		Revision:
Date: 13.07.2012	Drawn by:		Sheet of
File: nsa12_switch_buffer_8x.SchDoc		Time:13:40:00	



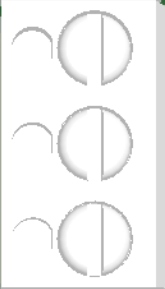
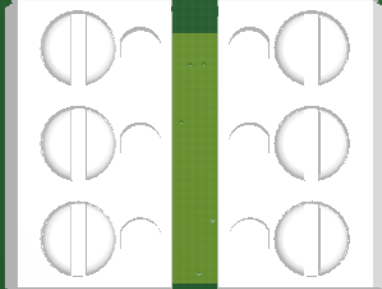
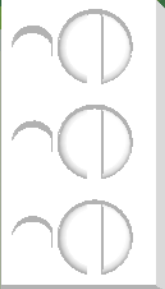
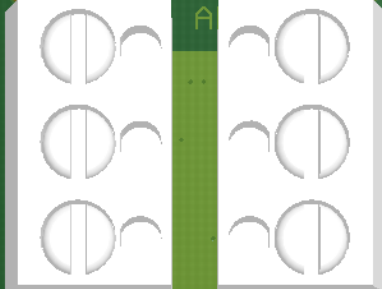
Title <b>NSA12 limit switch buffer</b>		 Max-Planck-Institut für extraterrestrische Physik Giessenbachstrasse 85748 Garching, Germany Germany	
Project ARGOS			
Size: A4	Document Number:	Revision: 1	
Date: 13.07.2012	Drawn by: J. Ziegleder	Sheet	of
File: nsa12_switch_buffer_shrink.SchDoc		Time:13:40:00	

JZ 2012  
MPE ARGOS

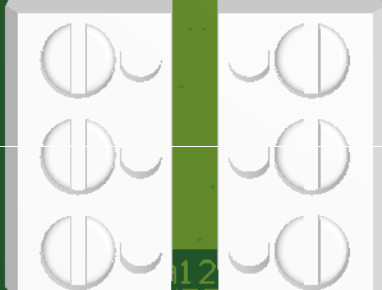
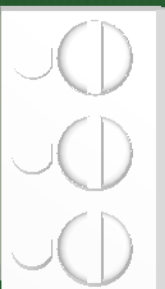
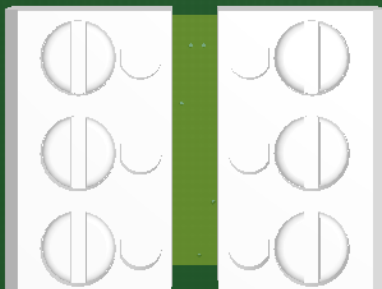


NSA12 SW.  
BUFFER  
TOL TOP

JZ 2012  
A



MOCON → NSA12  
•+5V• +5V•  
•LIMIT• LIMIT•  
•GND• GND•



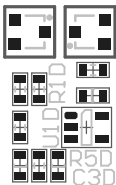
12  
BUFFER  
BOT



JZ 2012  
MPE ARGOS

C2D R4DR2D

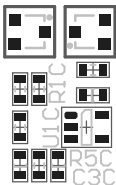
D1 D



R3D D2D

C2C R4CR2C

D1 C



R3C D2C

NSA12 ←

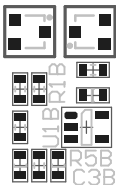
MOCON

- +5V
- LIMIT
- GND

- +5V •
- LIMIT •
- GND •

C2B R4BR2B

D1 B



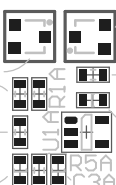
R3B D2B

C1 B

NSA12

C2A R4AR2A

D1 A

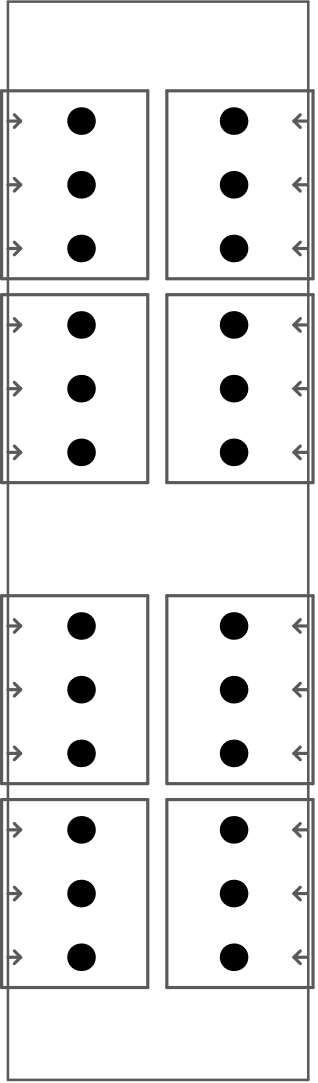


R3A D2A

C1 A

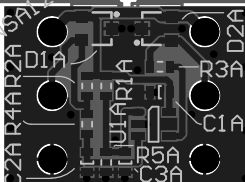
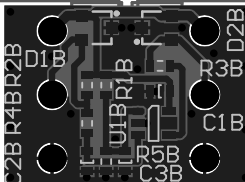
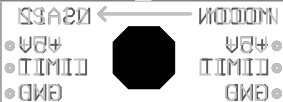
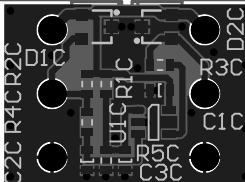
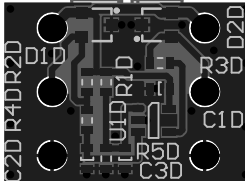
NSA12 SW.  
BUFFER

TOL



Quantity	Comment	Description	Designator	Footprint	Lieferant	Lieferant - Bestellnummer
8		Pad	MoCon1A, MoCon1B, MoCon1C, MoCon1D, NSA1A, NSA1B, NSA1C, NSA1D	Wago 237-133	Bürklin	09H436
4	10n/ 50V	Capacitor 100n 50VDC	C2A, C2B, C2C, C2D	CAPC1608N	RS Components	
8	100n/ 50V	Capacitor 100n 50VDC	C1A, C1B, C1C, C1D, C3A, C3B, C3C, C3D	CAPC1608N	RS Components	
8	MMBZ6V2AL	Zener Transient Voltage Suppressors	D1A, D1B, D1C, D1D, D2A, D2B, D2C, D2D	SOT-23	RS Components	687-8253
4	LM397	Single General Purpose Voltage Comparator	U1A, U1B, U1C, U1D	SOT23-5N	RS Components	535-9515
4	100k	Resistor	R5A, R5B, R5C, R5D	RESC1608N		
4	10k	Resistor	R2A, R2B, R2C, R2D	RESC1608N		
4	1k	Resistor	R4A, R4B, R4C, R4D	RESC1608N		
4	22	Resistor	R3A, R3B, R3C, R3D	RESC1608N		
4	330k	Resistor	R1A, R1B, R1C, R1D	RESC1608N		

BBBARB02  
2202022

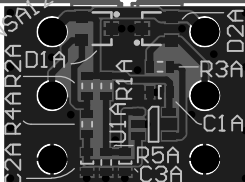
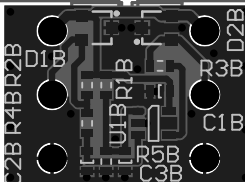
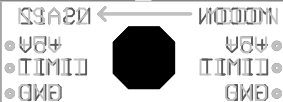
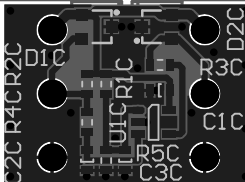
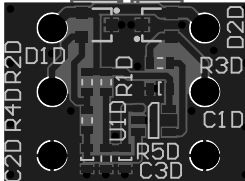


BBBARB01  
2202022

BOT TOP



BBBARB02  
2202022



BBBARB02  
2202022  
BOT TOP