

CREATO CON LA VERSIONE DIDATTICA DI UN PRODOTTO AUTODESK

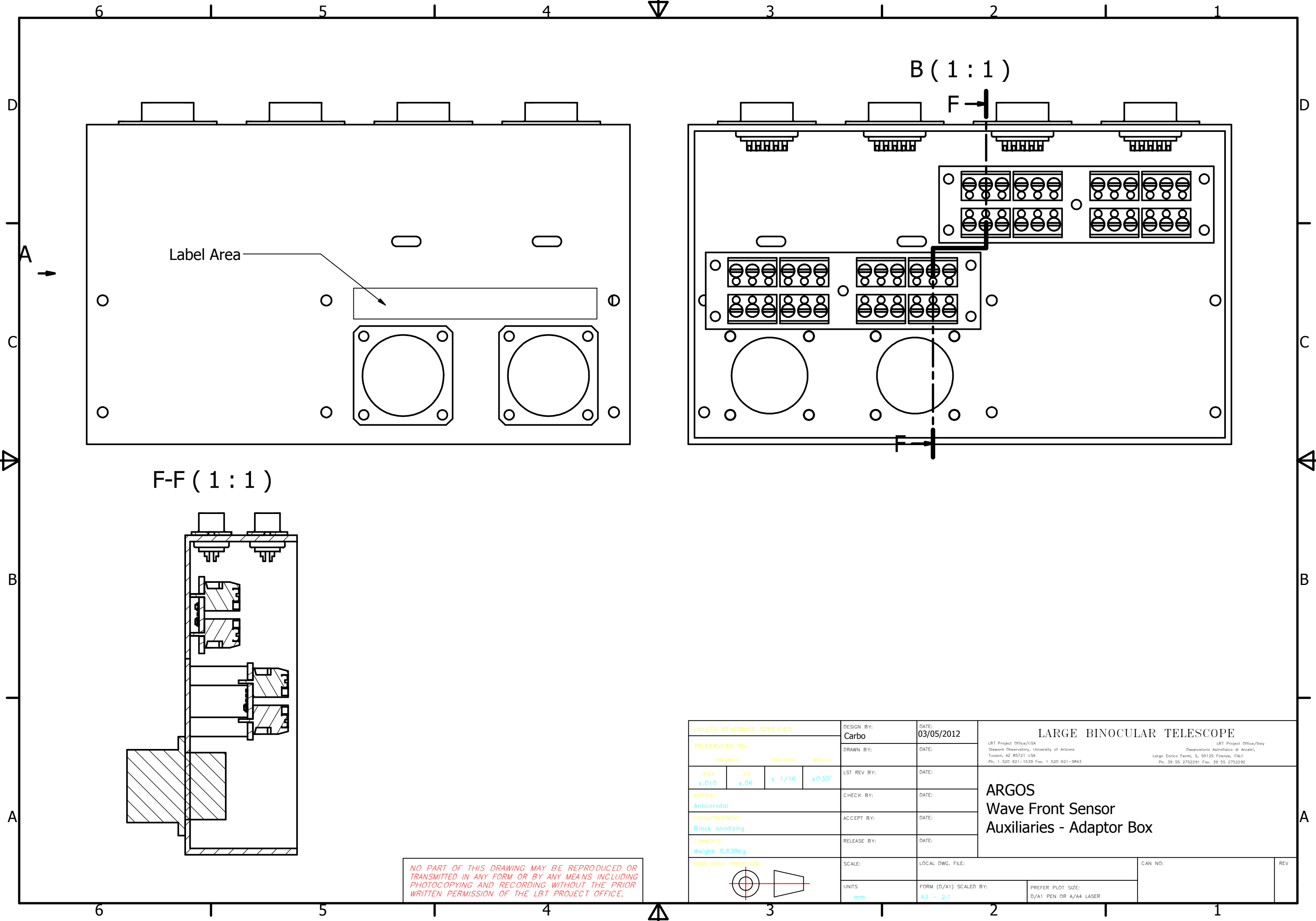
CREATO CON LA VERSIONE DIDATTICA DI UN PRODOTTO AUTODESK

LARGE BINOCULAR TELESCOPE
LBT Project Office/USA
 Steward Observatory, University of Arizona
 Tucson, AZ 85721 USA
 Ph. 1 520 621-1539 Fax. 1 520 621-9843
LBT Project Office/Italy
 Osservatorio Astronomico "G. Galilei"
 Linceo, 5, 50125 Firenze, ITALY
 Ph. 39 55 2752291 Fax. 39 55 2752292

ARGOS
 Wave Front Sensor
 Auxiliaries - Adaptor Box

UNLESS OTHERWISE SPECIFIED	DESIGN BY:	DATE:
	Carbo	03/05/2012
TOLERANCES ON:	DRAWN BY:	DATE:
DECIMALS	FRACTIONS	ANGLES
.XXX +.010	.XX +.06	+ 1/16 ±0.30°
MATERIAL:	CHECK BY:	DATE:
Anticorrosal		
FINISH/TREATMENT:	ACCEPT BY:	DATE:
Black anodizing		
COMMENTS:	RELEASE BY:	DATE:
Weight: 0.038Kg		
THIRD ANGLE PROJECTION	SCALE:	LOCAL DWG. FILE:
	UNITS	FORM (D/A1) SCALED BY:
	mm	A3 - 2:1
		PREFER PLOT SIZE:
		D/A1 PEN OR A/A4 LASER
	CAN NO.:	REV

NO PART OF THIS DRAWING MAY BE REPRODUCED OR TRANSMITTED IN ANY FORM OR BY ANY MEANS INCLUDING PHOTOCOPIING AND RECORDING WITHOUT THE PRIOR WRITTEN PERMISSION OF THE LBT PROJECT OFFICE.



Label Area

B (1 : 1)

F-F (1 : 1)

NO PART OF THIS DRAWING MAY BE REPRODUCED OR TRANSMITTED IN ANY FORM OR BY ANY MEANS INCLUDING PHOTOCOPYING AND RECORDING WITHOUT THE PRIOR WRITTEN PERMISSION OF THE LBT PROJECT OFFICE.

UNLESS OTHERWISE SPECIFIED				DESIGN BY: Carbo	DATE: 03/05/2012	LARGE BINOCULAR TELESCOPE <small>LBT Project Office/USA Steward Observatory, University of Arizona Tucson, AZ 85721 USA Ph. 1 520 621-1539 Fax. 1 520 621-9843</small>	
TOLERANCES ON:				DRAWN BY:	DATE:		
DECIMALS	FRACTIONS	ANGLES		LST REV BY:	DATE:	ARGOS Wave Front Sensor Auxiliaries - Adaptor Box	
.XXX +.010	.XX +.06	± 1/16 ±0.30°		CHECK BY:	DATE:		
MATERIAL: Anticorodal				ACCEPT BY:	DATE:		
FINISH/TREATMENT: Black anodizing				RELEASE BY:	DATE:		
COMMENTS: Weight: 0.038Kg				SCALE:	LOCAL DWG. FILE:	CAN NO.:	REV
THIRD ANGLE PROJECTION				UNITS: mm	FORM (D/A1) SCALED BY: A3 - 2:1	PREFER PLOT SIZE: D/A1 PEN OR A/A4 LASER	

