



**LBT-ADOPT  
TECHNICAL REPORT**

Doc.No : nnnfnnn  
Version : B  
Date : 22 Jan 2013



## **FLAO user procedures**

Prepared by

Lorenzo Busoni, Alfio Puglisi, Juan Carlos Guerra,  
Enrico Pinna, Simone Esposito

Approved by

\_\_\_\_\_

Released by

\_\_\_\_\_



Doc.No : nnnfnnn  
Version : B  
Date : 22 Jan 2013

## LBT-ADOPT TECHNICAL REPORT

2013



### ABSTRACT

This document describes a set of procedures to operate the FLAO system. It focuses on daytime operations to check the functionality of the system before on-sky operations or after engineering work on the telescope that could require a functionality test.

It is not meant to provide information about how to calibrate the system, nor to provide a low-level description of engineering tasks.

It is not needed during night-time; for the standard on-sky operation the AOS GUI should provide the Telescope Operator with all the needed functionality.



Doc.No : nnnfnnn  
Version : B  
Date : 22 Jan 2013

## LBT-ADOPT TECHNICAL REPORT

3034



### Modification Record

Version	Date	Author	Section/Paragraph affected	Reason/Remarks
A	21 Jan 2013	L. Busoni, A. Puglisi, JC Guerra, E. Pinna, S. Esposito	All	First release of the document
B	22 Jan 2013	As above	All	Fine-tuned and new section on performance and elablib
C	28 Jan 2013	As above	All	Added sections on fastlink check and readout noise measurement. Several other minor changes.
D	27 Sep 2013	As above	5, 13, 14	Added sections on night-time preparations, preset tables and Pisces tasks.
E	20 Jan 2014	A. Puglisi	3.3	Fastlink test updated

### Abbreviations, acronyms and symbols

Symbol	Description
LBT	Large Binocular Telescope
AdSec	Adaptive Secondary Mirror
FLAO	First Light Adaptive Optics system
IRTC	Infrared Test Camera
WFS	Wavefront Sensor



Doc.No : nnnfnnn  
Version : B  
Date : 22 Jan 2013

# LBT-AADOPT TECHNICAL REPORT

4034



## Contents

<b>1</b>	<b>General considerations</b>	<b>5</b>
<b>2</b>	<b>Start and check Software status</b>	<b>5</b>
<b>3</b>	<b>Start system and check hardware status</b>	<b>6</b>
3.1	Power On and Set AdSec Mirror .....	6
3.2	Power On FLAO WFS .....	6
3.3	Test Fastlink connection .....	6
<b>4</b>	<b>Check WFS functionality</b>	<b>8</b>
<b>5</b>	<b>Prepare WFS for night-time operation</b>	<b>9</b>
<b>6</b>	<b>Operate the AO system in closed-loop in daytime</b>	<b>10</b>
6.1	Setup of telescope for daytime operation .....	10
6.2	Setup of WFS for daytime operation .....	11
6.3	Setup of IRTC for daytime operation .....	11
6.4	Retroreflector Alignment .....	13
6.5	Close AO loop in daytime .....	15
<b>7</b>	<b>Day-time IRTC closed-loop focus optimization</b>	<b>18</b>
<b>8</b>	<b>Day-time IRTC closed-loop performance check</b>	<b>21</b>
<b>9</b>	<b>End of daytime work</b>	<b>22</b>
<b>10</b>	<b>Store a flat</b>	<b>22</b>
<b>11</b>	<b>Readout noise measurement</b>	<b>23</b>
<b>12</b>	<b>Day-time pupil wobble measurement</b>	<b>24</b>
<b>13</b>	<b>Pupil wobble measurement using LEDs</b>	<b>25</b>
<b>14</b>	<b>Preset table update</b>	<b>26</b>
<b>15</b>	<b>PISCES tasks</b>	<b>26</b>
15.1	Focusing .....	26
15.2	Telemetry synchronization .....	27
<b>16</b>	<b>Example Use of elablib</b>	<b>27</b>
<b>17</b>	<b>Miscellaneous</b>	<b>29</b>
17.1	Start GUIs .....	29
17.2	Check and set Telescope configuration .....	30
17.3	WFS stage centering .....	30
17.4	AO loop parameters .....	30
17.5	Saving AO telemetry .....	31
17.6	Coma correction .....	33
<b>18</b>	<b>Maintaining this document</b>	<b>33</b>



Doc.No : nnnfnnn  
 Version : B  
 Date : 22 Jan 2013

LBT-ADOPT TECHNICAL REPORT



5034

**1 General considerations**

This documents refers to FLAO unit installed on DX side with IRTC.  
 To use SX unit replace in every commands “right” with “left” and log on “wfsx” and “adsecx” computers (same passwords)  
 The procedure was tested at obs3 terminal in LBT’s control room in date 21<sup>st</sup> Jan 2013. It should be possible to operate the system also from obs2, obs4 and obs5.

**2 Start and check Software status**

FLAO software runs on two separate computers: adsecdx and wfsdx for AdSec and WFS software control respectively.  
 Typically the AdSec SW is always up and running, while it is a good idea to shut down and restart the software of the WFS computer.

**Prerequisites:**

- FLAO control software installed and configured on adsecdx and wfsdx

Action	Procedure	Notes
1. Log on obs3		user: lbto pwd: OPSin2010
2. Open terminal and ssh on wfsdx	<code>lbt@obs3 % ssh -X AOeng@wfsdx</code>	pwd: m1rr0r
3. Stop software	<code>[AOeng@wfsdx ~]\$ w_stop</code>	
4. Start software	<code>[AOeng@wfsdx ~]\$ w_start</code>	
5. Open terminal and ssh on adsecdx	<code>lbt@obs3 % ssh -X AOeng@adsecdx</code>	pwd: m1rr0r
6. Check software	<code>[AOeng@adsecdx ~]\$ adsc_check</code> If processes are not running: <code>[AOeng@adsecdx ~]\$ adsc_start</code>	AdSec SW must always be running
7. Check shared disk	On WFS computer <code>[AOeng@wfsdx ~] ls /towerdata</code> If it is empty, then the shared disk is not mounted: <code>[AOeng@wfsdx ~] sudo mount /towerdata</code>	
8. Check AOS status	???	



Doc.No : nnnfnnn  
Version : B  
Date : 22 Jan 2013

## LBT-ADOPT TECHNICAL REPORT

6234



### 3 Start system and check hardware status

The secondary mirror should always been powered on and in the safe status. The WFS is switched off after every use.

#### Prerequisites:

- Execute: Procedure 2 - Start and check Software status

#### 3.1 Power On and Set AdSec Mirror

Action	Procedure	Notes
1. Open AOS gui	See Procedure 17.1	
2. Check SW status	Check green line on Adaptive Secondary panel (close to ON/OFF button)	
3. Check AdSec is On	The text area on the right of the OFF button should say "Safe"	Power ON if it is OFF (and report to Arcetri team: the AdSec must always be on!)
4. Set AdSec shell	Telescope must be ready (elevation 90° and swing arm deployed) Press SET button in Adaptive Secondary panel	Check log messages in the bottom of the window and wait approx 2 minutes. Text area changes to "Set" in the Adaptive secondary panel Ready for SL turns green in the AO panel

#### 3.2 Power On FLAO WFS

Action	Procedure	Notes
1. Open AOS gui	See Procedure 17.1	
2. Check SW status	Check green line on FLAO WFS tab (close to ON/OFF button)	
3. Power On FLAO WFS	Press ON button on FLAO WFS	Check log messages in the bottom of the window and wait approx 5 minutes. The black text area in FLAO WFS tab close to the OFF button says "ON". Ready for AO turns green in the AO panel (if the AdSec Mirror has been set).

#### 3.3 Test Fastlink connection

This test is optional but recommended when the AGW has been dismantled and remounted on the telescope, or if work has been done on the fiber connections either at the AGW output or in the treehouse.

Action	Procedure	Notes
1. Open AdSec Control GUI	See Procedure 17.1	
2. Select fastlink input port	In the "Focal station" tab, select the input port corresponding to the WFS focal station (for example, "bentGregorianFront") and click the "Set" button	
3. Run fastlink test	On adsecdx computer:	Check the output at the end of the



Doc.No : nnnfnnn  
 Version : B  
 Date : 22 Jan 2013

LBT-AADOPT TECHNICAL REPORT

7034



```
[AOeng@adsecdx ~]$ aoidl script - will output "Fastlink OK" or
IDL> @startup-onlycom "FAILED".
IDL> .r test_fastlink.pro
```

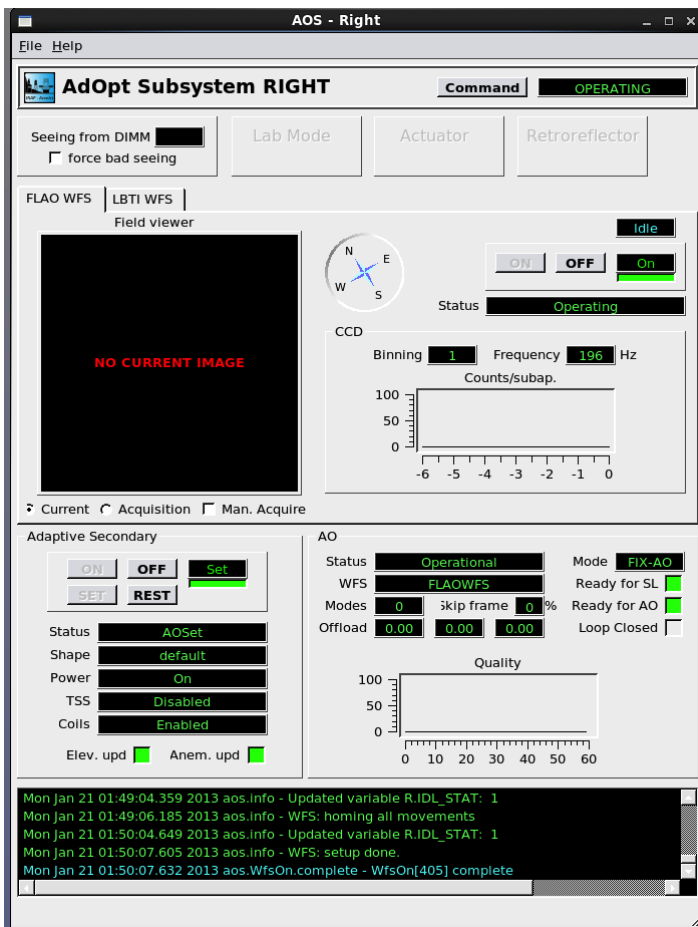


Figure 1: Screenshot of AOSGUI after successful completion of Procedure 3



Doc.No : nnnfnnn  
 Version : B  
 Date : 22 Jan 2013

LBT-ADOPT TECHNICAL REPORT

8234



#### 4 Check WFS functionality

This step is required to ensure the WFS unit is correctly working. It applies a board setup to send the beam from the internal source to the CCD39. There is no need of the retroreflector, the AdSec can be left in Safe mode, and the IRTC and the telescope are not needed. This procedure can be also used to check basic WFS functionality when the WFS is in the lab (provided the AGW unit is correctly powered, connected to the wfsdx computer and connected to cooling).

**Prerequisites:**

- Execute: Procedure 2 - Start and check Software status
- Execute: Procedure 3.2 - Power On FLAO WFS

Action	Procedure	Notes
1. Setup WFS for internal check	Open terminal on wfsdx and write: <code>[AOeng@wfsdx]\$ runBoardSetup.py -load WUnitCheck</code>	There is no need for AdSec, retroreflector, IRTC, telescope.
2. Open CCD39 GUI	See Procedure 17.1	
3. Check illumination	You should see pupil images on the CCD39 GUI. See Figure 2	

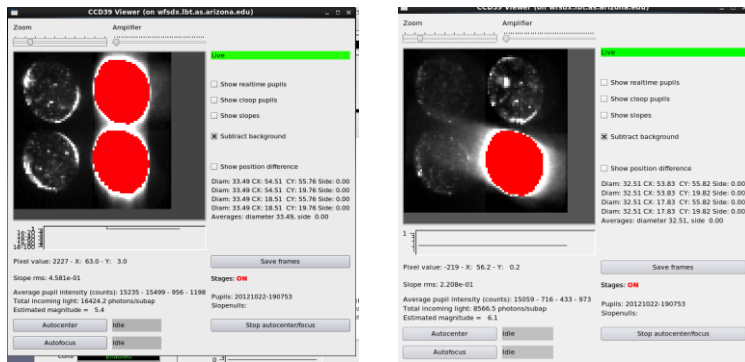


Figure 2 Example screenshots of CCD39 GUI at the end of Procedure 4





Doc.No : nnnfnnn  
 Version : B  
 Date : 22 Jan 2013

LBT-ADOPT TECHNICAL REPORT

9034



### 5 Prepare WFS for night-time operation

This step is required to ensure that the WFS unit is ready for night-time operation after daytime checks have been completed. In essence, it shuts down the calibration lamp and ensures that the beam splitter cube is out of the optical path.

**Prerequisites:**

- Execute: Procedure 2 - Start and check Software status
- Execute: Procedure 3.2 - Power On FLAO WFS

Action	Procedure	Notes
4. Setup WFS for night time operations	Open terminal on wfsdx and write: [AOeng@wfsdx]\$ runBoardSetup.py -load calibUnitNight	There is no need for AdSec, retroreflector, IRTC, telescope.
5. Open WFS Hardware GUI	See Procedure 17.1	
6. Check that calibration unit is off	Select "Power controller" in the left-hand panel. Check that "Flowerpot power" is Off (red), and that "Cube stage", "Lamp" and "Cube rotator" are all Offline (yellow) like in the screenshot below.	

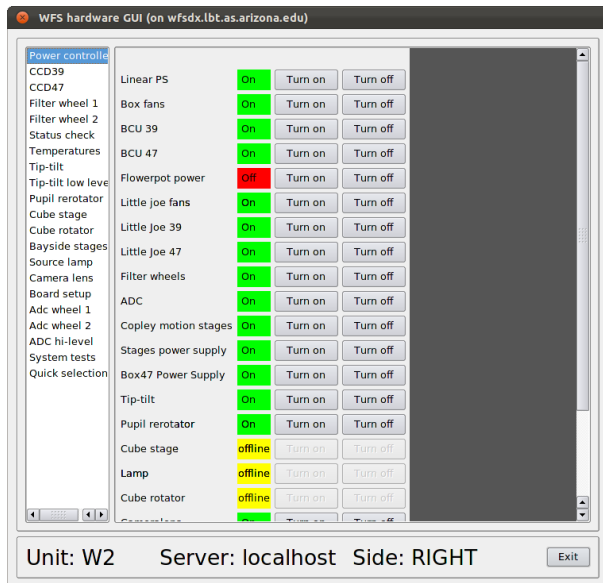


Figure 3: screenshot of WFS Hardware GUI with the calibration unit off.



Doc.No : nnnfnnn  
Version : B  
Date : 22 Jan 2013

## LBT-ADOPT TECHNICAL REPORT

10234



### 6 Operate the AO system in closed-loop in daytime

These procedures are needed to close the AO loop in daytime using the retroreflector. This is a basic functionality test to ensure that the AO system is correctly configured and working.

#### Prerequisites:

- Execute: Procedure 2 - Start and check Software status
- Execute: Procedure 3 - Start system and check hardware status
- (Optional, warmly suggested) Execute: Procedure 4 - Check WFS functionality

#### 6.1 Setup of telescope for daytime operation

Action	Procedure	Notes
1. Install RetroReflector	Ask Telescope Manager <b>well</b> in advance	
2. Authorize IRTC	See procedure 17.2	
3. Deploy swing arms	See procedure 17.2	
4. Home AGW probe	See procedure 17.2	
5. Set HBS on	Ask TO or Telescope Manager	
6. Set stow-pins and activate elevation drive	Ask TO or Telescope Manager	
7. Start rotator	Ask TO or Telescope Manager	
8. Switch off light in the dome	Ask TO or Telescope Manager	
9. Init Hexapod and set focal station	Ask TO or Telescope Manager, or follow this procedure:  I. Open OSSGUI (See Procedure 17.1) II. Click on "Secondary (M2)" right III. Press on Init button and wait approx 2min for homing. Wait for the "Mirror homed" indication turning green. IV. Click on "Tertiary (M3)" right and set the WFS focal station (i.e. bentGregorianFront)	
10. Align hexapod	I. Open PSFGUI2 (See Procedure 17.1) II. Click on Disable button in the Lookup Table area. III. Click on Disable button in the Temperature Correction area. IV. Click on every "Remove Corrections" button in PSFGUI2. V. Insert Global Offset: look for last valid values in LBTO twiki, remember to press enter on each text area and finally press Update. VI. Check that the entered values are reflected in "Total Collimation" and in "Hexapod Platform position" fields in the same gui. A small	Move page with coordinates in the PUBLIC twiki



Doc.No : nnnfnnn  
Version : B  
Date : 22 Jan 2013

## LBT-ADOPT TECHNICAL REPORT

11034



deviation is acceptable.

### 6.2 Setup of WFS for daytime operation

#### Prerequisites:

- Execute: Procedure 2 - Start and check Software status
- Execute: Procedure 3 - Start system and check hardware status
- (Optional, warmly suggested) Execute: Procedure 4 - Check WFS functionality

Action	Procedure	Notes
1. Setup WFS unit for daytime operation	Open terminal on wfsdx and write: [AOeng@wfsdx]\$ runBoardSetup.py -load calibUnitDay Wait for the prompt on the terminal. There is no visible feedback, a part for the pupil image disappearing from CCD39 GUI (if it is open).	

### 6.3 Setup of IRTC for daytime operation

The IRTC software runs on a Windows computer which is accessed remotely using a “remote desktop” connection. Most IRTC optical parameters like field of view, filter, etc. must be configured manually using the Windows interface. In order to enable automatic frame acquisition from the AO software, the “irs” program must be up and running on the appropriate telescope computer.

The “irc” client program can be used to check the irs functionality. It can be run from any LBTO *obs* computer.

Note1: automatic image acquisition using the irc program or the AO system must be done with the camera live display OFF. If the live display is enabled while an image is taken, an error will occur.

Note2: this procedure contains a workaround (step 4) for a known bug in the IRTC code: the first image taken in automatic mode (that is, through irs) often fails. The solution is to take one or two images manually before starting any work.

#### Prerequisites:

1. IRTC installed, correctly connected. IRTC PC powered on.

Action	Procedure	Notes
1. Start IRTC connection	On obsX terminal: <i>\$startirc</i> Username: testcamera Password: ... Kill old IRTC gui Click on IRTC gui (icon on the desktop).	In case of errors (e.g. Error opening camera) try to restart the computer using the Window's Task Manager. Wait 5 minutes and try to reconnect with <i>startirc</i> . In case of long stops the IRTC PC in the lower-right treehouse could be off: switch it on.
2. Configure IRTC	Click Wide Field (even if already selected) and wait for Select filter Empty (re-apply) Set cooling to 240K and tick Enable Set Exp time to 1000000 us (1s)	You will not see any spot on the camera at that stage, unless the system has been already aligned



Doc.No : nnnfnnn  
Version : B  
Date : 22 Jan 2013

## LBT-ADOPT TECHNICAL REPORT

12034



	Enable live display (videocamera icon, "grab" tooltip), Check that frame index in the status bar is running.	
3.	Check "irs" functionality. <i>lbt@obs3 % irc GetFilter</i> Answer: <i>Empty 0</i>	The current filter will be printed on screen. If any error occurs, ask telescope software group.
4.	Test automatic acquisition Disable live display (videocamera icon, "grab" tooltip). <i>lbt@obs3 % irc GetImage</i> Answer: <i>irc.xxxx.xxxx.fits</i>	The GetImage command replies with the FITS filename. If an error occurs, repeat the command a few times.



Doc.No : nnnfnnn  
Version : B  
Date : 22 Jan 2013

## LBT-ADOPT TECHNICAL REPORT

13034



### 6.4 Retroreflector Alignment

#### Prerequisites:

- Execute: Procedure 3 - Start system and check hardware status
- (Optional, warmly suggested) Execute: Procedure 4 - Check WFS functionality
- Execute: Procedure 6.1 - Setup of telescope for daytime operation
- Execute: Procedure 6.2 - Setup of WFS for daytime operation
- Execute: Procedure 6.3 - Setup of IRTC for daytime operation

Action	Procedure	Notes
1. Check spot in the IRTC	If the PSF is already visible in the IRTC (actually you'll probably see 2 spots) then you can skip the spiral-search and move to point 4- Center the spot	
2. Align RetroReflector	Open PSFGUI2 (See Procedure 17.1) Set Global Offset Z to 0mm	
3. Start spiral-search	<pre>[AOeng@adsecdx ~]\$ aoidl IDL&gt; @startup-onlycom IDL&gt; print, hexa_spiral(500e-6, 15, /app)</pre> <p>Now look carefully at the IRTC GUI to see the spot passing on the screen. Be careful and don't distract yourself: it can take several minutes. Positions are written in the terminal, an IDL plot is continuously updated with the explored positions. When you see the light in the IRTC stop the routine (Ctrl-C in IDL terminal)</p>	
4. Center the spot	Modify the Global Offset in the PSFGUI2 to center the spot in the center (160,128 within +/- 7 pixels) of the IRTC field and to focus the image. You'll see 2 spots because of a reflection. Choose the one on the <b>right</b> . <b>Write down the Global Offsets: they will be needed next time to skip the spiral search.</b>	
5. Coma correction	See Procedure 17.7 - Coma correction	
6. WFS stage centering	See Procedure 17.3 - WFS stage centering	This is likely not needed

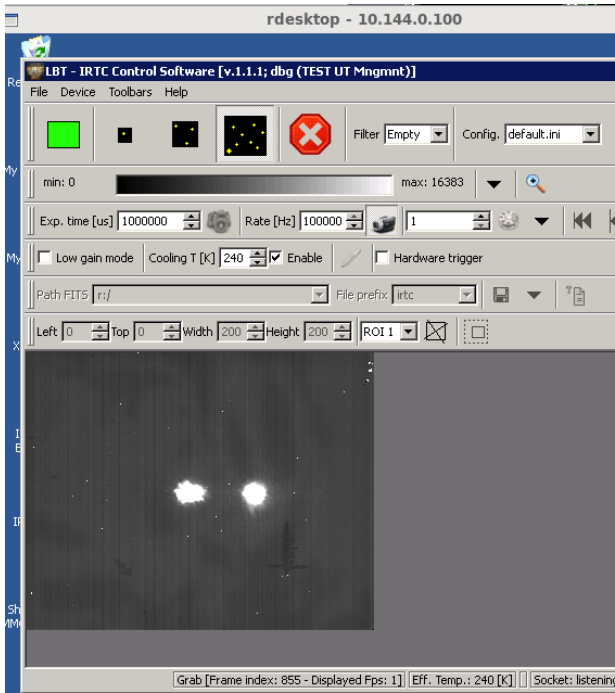


Figure 4 IRTC as it appears at the end of Procedure 6.4. **Note:** the right spot should be centered in the field, not the left one as shown in this picture.



## 6.5 Close AO loop in daytime

### Prerequisites:

- Execute: Procedure 6.4 - Retroreflector Alignment

Action	Procedure	Notes
1. Enable RetroReflector Mode	On the Adsec terminal [AOeng@adsecdx]\$ enable_rr_mode.sh Open AOSGUI (See Procedure 17.1) In the AOSGUI the retroreflector led turns yellow	This is needed to prevent sending offloads to the M1.
2. Preset AO system	Open AOS Commands GUI (See Procedure 17.1) In the PresetAO panel in the "AOS Commands" GUI set the following parameters: AO mode = ACE-AO WFS spec. = FLAOWFS Ref Star X and Y = 0 Mag = 8 Color id = 0 Press "PresetAO" button Wait (approx 2 min) for <b>Success</b> or <b>Failure</b> in the black text area close to the button.	WFS is preset. In the FLAO WFS panel of the AOS GUI binning and frequency are updated. In case of failure look for HW errors in the log area in the AOS GUI.
3. Acquire Reference	Press AcquireRef button in the "AOS Commands" GUI Wait for Success or Failure in the black text area close to the button	
4. Cube angle fine-tuning	<u>Open Wfs Arbitrator GUI (see Procedure 17.1).</u> <u>In the "Loop params" panel enter the following parameters:</u> <u>binning=1</u> <u>Loop frequency=200 Hz</u> <u>Modulation=20</u> <u>And click the "Apply" button.</u>  Open CCD39 GUI (See Procedure 17.1) Open HW GUI (See Procedure 17.1) Select "Cube rotator" in the left-hand panel of the HW GUI. Apply 0.1° <b>relative</b> movements (positive or negative) until the pupils are perfectly round and are not vignetted on either side. Good position is a no-change position. Typical offset wrt to default position is <0.3°. See Figure 5.	This is required in case of large temperature offsets and is due to a miscalibration in the cube rotator stage. The parameters with high modulation are needed to have a sharp pupil border.
5. Re-Acquire Reference	Execute points 2 and 3 of this	

Deleted: NOTE: Execute also the "set loop parameters" section.



Doc.No : nnnfnnn  
Version : B  
Date : 22 Jan 2013

## LBT-ADOPT TECHNICAL REPORT

16/34



	procedure then move to point 6.
6. Close Loop	Press StartAO in the "AOS Commands" GUI. See Figure 6.

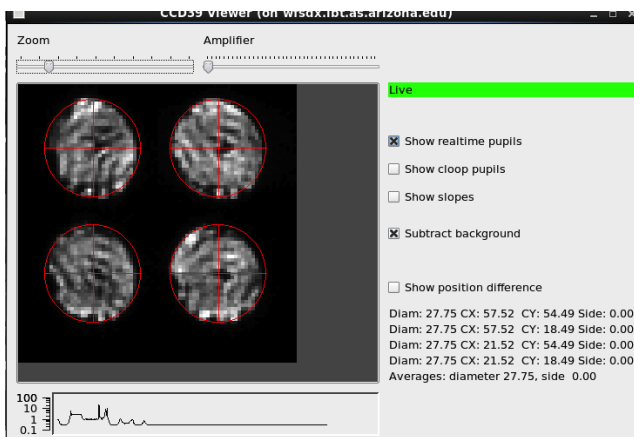


Figure 5 CCD39 GUI before cube angle fine-tuning. Pupils appear vignetted and are not perfectly round.





Doc.No : nnnfnnn  
Version : B  
Date : 22 Jan 2013

## LBT-ADOPT TECHNICAL REPORT

17034

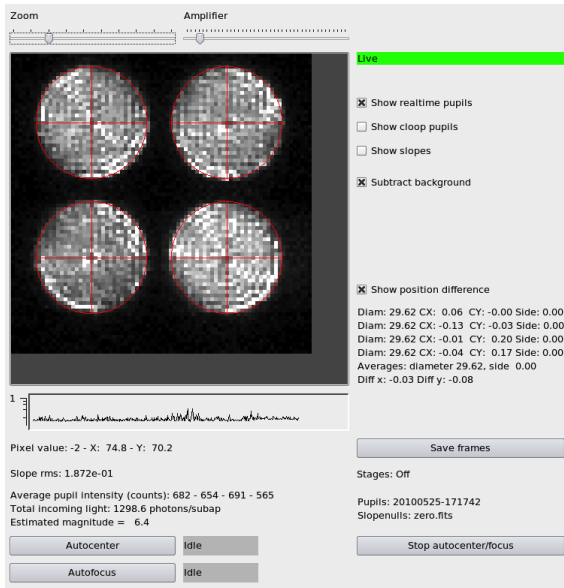


Figure 6 CCD39 GUI after cube angle fine-tuning and in closed loop



Doc.No : nnnfnnn  
Version : B  
Date : 22 Jan 2013

## LBT-ADOPT TECHNICAL REPORT

18734



### 7 Day-time IRTC closed-loop focus optimization

This procedure is needed to optimize focus on the instrument. In closed loop, the focus on the instrument is determined by the Z stage of the WFS board. For that, it is necessary to measure the optimal Z stage position to be used for each instrument configuration (filter and FoV). It is then responsibility of the Instrument Control software to set the WFS Z-stage to the measured values during on-sky operation.

#### Prerequisites:

- Execute: Procedure 6.5 - Close AO loop in daytime

Action	Procedure	Notes
1. Move to IRTC small field	I. Click small field in the IRTC GUI. You should see a defocused spot (see Figure 7) II. Focus spot on the IRTC using OffsetZ in the "AOS Command" GUI III. Select Filter H in IRTC IV. Center the spot in the IRTC field using OffsetXY "AOS Command"	OffsetZ command takes the <b>absolute</b> position as its argument. Range is from 0 to 50 mm. OffsetXY is a <b>relative</b> movement. Typical values are +/- 0.2 mm.
2. Select IRTC Filter	Select IRTC filter in the IRTC GUI	
3. Avoid saturation	Select IRTC Exposure time to have a peak value of 4000-5000 counts.	
4. Start Focus Optimization	Start the GUI on wfsdx: <code>[AOeng@wfsdx]\$ AutoFocusIrtcGui.py</code> Set the following parameter: Focus Range: 2 Focus Step: 0.2 Images to average: 50 PSF position: coordinates of PSF spot in the IRTC detector (use IRTC status bar) <b>NOTE: stop Live updating in the IRTC GUI</b> Press Start button and wait. In the IRTC you can see the defocused spots.	
5. Accept the results	The intensity vs Z position plot is shown . The procedure is guessing what the best Z-stage position is by looking for the maximum in the plot. A window pops up asking to accept the found position: accept it. If in the plot you don't see a clear maximum, it is a safe approach to iterate the procedure from point 4. IRTC image should look like the one in Figure 8	
6. Store the results	Write down the Z stage position together with the filter used.	

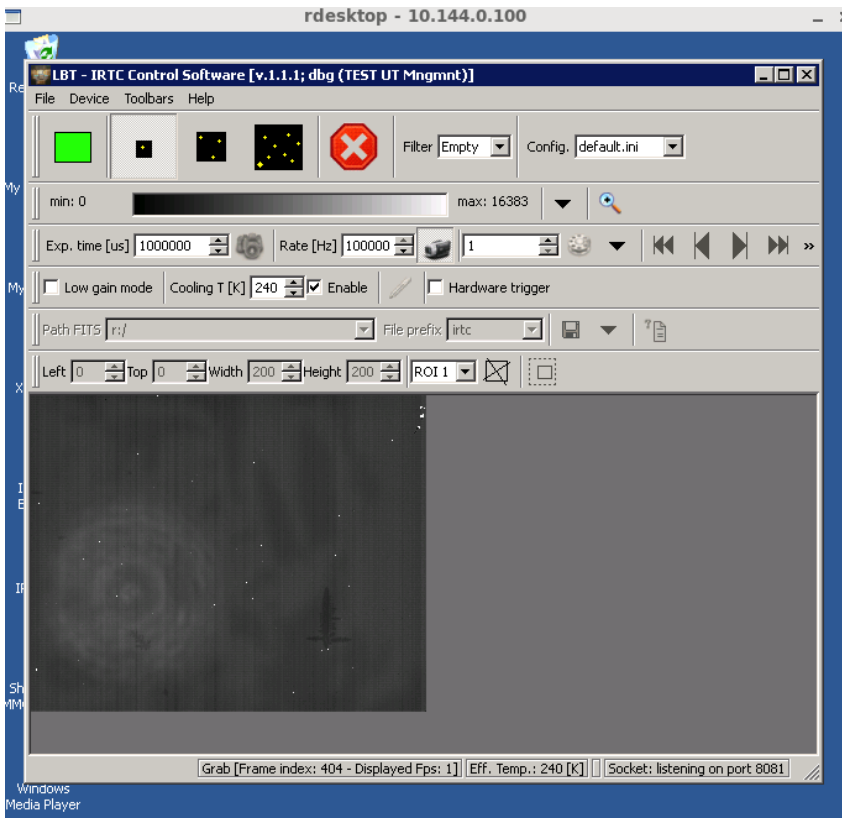


Figure 7 IRTC before tuning focus with "offset Z" command. This is the beginning of Procedure 7.



Doc.No : nnnfnnn  
Version : B  
Date : 22 Jan 2013

# LBT-ADOPT TECHNICAL REPORT

2013

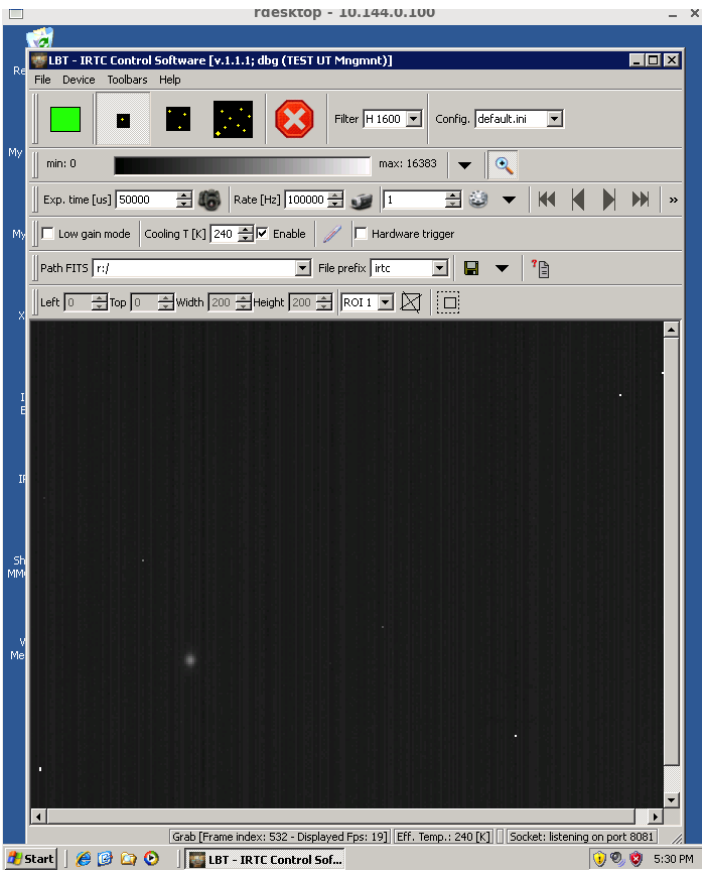


Figure 8 A well-focused PSF in closed-loop (H band, 3x2" FoV)



Doc.No : nnnfnnn  
Version : B  
Date : 22 Jan 2013

## LBT-ADOPT TECHNICAL REPORT

21034



### 8 Day-time IRTC closed-loop performance check

This procedure is needed to check closed-loop performance during day-time.

#### Prerequisites:

- Execute: Procedure 6.5 - Close AO loop in daytime
- Z-stage optimal position for the selected IRTC filter has been measured (see Procedure 7-Day-time IRTC closed-loop focus optimization)

Action	Procedure	Notes
1. Move to IRTC small field	Select small field in the IRTC GUI Select Filter H in IRTC If needed, move the spot in the IRTC field using OffsetXY "AOS Command" in order to avoid hot pixels and stay at least 50 pixels from the frame edge.	
2. Avoid saturation	Select IRTC Exposure time to have a peak value of 4000-5000 counts.	
3. Check Acquisition script	In wfsdx edit the file <i>/home/aoacct/acq/RR_irtc_psf</i> I. Set the correct exposure time (e.g. "irtc 0.02" set exposure time to 20ms) II. Set the number of frames to acquire (e.g. "image 500" acquires a cube of 500 IRTC frames). Hint: have 10s of total exposure time. Limit to 1000 frames. III. Set the Z-stage position to the best-focus value determined in Procedure 7 (e.g. "offsetz 48.5") Save the file	This scripts acquire 3 cubes of IRTC frames + 1 cube of dark frames + 3 cubes of IRTC frames
4. Stop Live updating IRTC	Click on the videocamera button in the IRTC GUI. The frame counter in the status bar stops increasing.	
5. Execute Acquisition script	At wfsdx terminal type: <i>acq /home/aoacct/acq/RR_irtc_psf</i> The script is executed. A set of measures is saved. Tracking numbers in the form YYYYMMDD_hhmmss (e.g. 20130122_180736) are written in the terminal. Take note of the first one and of the last one.	
6. Start elablib	See chapter 15.2	
7. Analyze the data	Use xelab. See chapter 15.2	



Doc.No : nnnfnnn  
Version : B  
Date : 22 Jan 2013

## LBT-ADOPT TECHNICAL REPORT

22/03/13



### 9 End of daytime work

Follow this procedure when the daytime activity is finished and you want to put the AO system in a safe state.

Action	Procedure	Notes
1. Open AOSGUI	Open AOSGUI (See Procedure 17.1)	
2. Switch off the WFS unit	Click on the OFF button in FLAO WFS panel	
3. Rest the AdSec unit	Click on REST button in the Adaptive Secondary panel <b>DO NOT power off the AdSec unit</b>	
4. Close GUIs	Close all the GUIs	

### 10 Store a flat

This procedure is needed periodically to store the best flat shape of the AdSec mirror. The procedure requires having the system in closed loop with very high degree of correction to have the best flat wavefront. The procedure records 10 seconds of diagnostic data and stores in the system the data needed to reproduce this mirror shape in the future.

Since AdSec position sensors may slowly get miscalibrated with the time, this procedure should be run periodically.

#### Prerequisites:

- Execute: Procedure 6.5 - Close AO loop in daytime

Action	Procedure	Notes
1. Open AdSec Control GUI	Open AdSec Control GUI (See Procedure 17.1)	
2. Enter flat name	Select "Shape Control" tab In the "Save shape" edit box enter the name for the flat. Chose a sensible name, possibly containing the date in the form YYYYMMDD.	
3. Is this going to be the new default shape?	Is this going to be the new default shape for the AdSec Mirror? If yes, check "Set as default".	
4. Save data and store new file	Press Save and wait until "Execution Success" is written on top of the GUI (approx. 10s)	



## 11 Readout noise measurement

This procedure performs an estimation of the electronic readout noise of the WFS CCD. The measurement also includes other sources of noise, such as dark current. Only the WFS needs to be powered on, and no requirement are set on other systems except for dark conditions in the telescope dome.

### Prerequisites:

- Execute: Procedure 3.2 - Power On FLAO WFS

Action	Procedure	Notes
1. Turn off all lights in the telescope dome	Ask TO or telescope manager	
2. Ensure that WFS lamp is off	Open HW GUI (See Procedure 17.1) Select "Source lamp" in the left-hand panel of the HW GUI. Move the intensity slider to 0% (all the way to the left)	
3. Start measurement	Select "System tests" in the left-hand panel of the HW GUI. Click the "ccd39 RON AO TABLE test" button.	
4. Save output	The measurement progress appears in the text box below the buttons. A resume is printed at the end and can be copied&pasted. See below for a screenshot with example values.	

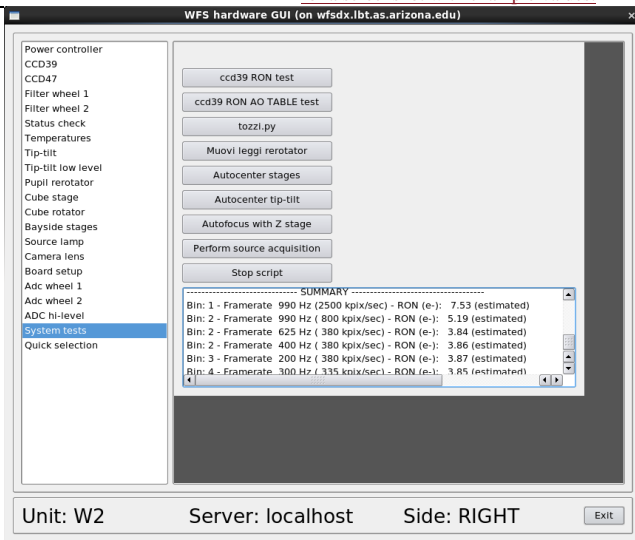


Figure 9: RON AO TABLE test output with good readout noise values.

Formatted: Caption



## 12 Day-time pupil wobble measurement

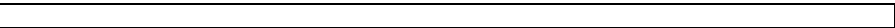
This measurement must be done with the AO loop closed, either with the retroreflector or on sky.

### Prerequisites:

- Execute: Procedure 6.5 - Close AO loop in daytime

Action	Procedure	Notes
1. Load 10 modes gain file.	Open AdSec Arbitrator GUI (See Procedure 17.1) In the Gain panel of the Reconstructor tab, click the browse button and select the "0.1_10modi.fits" file. Click Apply	A low-order loop (10 modes only) will keep the loop stable while the pupil moves and rotates.
2. Slow down telescope derotator motion	Open telescope rotator panel (See Procedure 17.1) In the rotator panel, click "Motion Ctrl" In the "Persistent Parameters" panel, set the "Max Vel" to 1 deg/sec	This will allow the WFS rotator tracking to keep up with the derotator, which would be otherwise too fast.
3. Ensure rotator tracking is ON	Open the WFS Control GUI (see Procedure 17.1) and check that Telescope Rotator tracking is Enabled (green). If not, start it clicking the "On" button.	
4. Open displays	Open the WFS Hardware GUI GUI (See Procedure 17.1) and select the "Camera lens" panel Open the PSF GUI (see Procedure 17.1) and click on "Secondary"	
5. Move telescope derotator to 0 degrees position	In the telescope rotator panel, enter 0 in the position box next to the "Slew to Hold" button Press "Slew to Hold" button	
6. Collect data	Note down: <ul style="list-style-type: none"><li>- Telescope derotator angle</li><li>- X and Y cameralens position</li><li>- RX and RY thin shell offloads</li></ul>	
7. Repeat measurement along a circle	Restart from step 5 at 30-degree intervals (0, 30, 60... 360)	
8. Restore telescope derotator motion speed	Open telescope rotator panel (See Procedure 17.1) In the rotator panel, click "Motion Ctrl" In the "Persistent Parameters" panel, set the "Max Vel" to 5 deg/sec	





### 13 Pupil wobble measurement using LEDs

It is possible to measure the pupil wobble using the secondary error LEDs. This measure can be done at any time, provided that there is no light from any source on the WFS (either dome closed with lights off, or dome open on dark sky background).

**Prerequisites:**

- WFS is powered on (Procedure 3.2)

Action	Procedure	Notes
1 Turn on the four LEDs.	Start aoidl on adsecdx: <i>[AOeng@adsecdx ~]\$ aoidl</i> <i>IDL&gt; @startup-onlycom</i> <i>IDL&gt; print, led_switch(0, /ON)</i> <i>IDL&gt; print, led_switch(1, /ON)</i> <i>IDL&gt; print, led_switch(2, /ON)</i> <i>IDL&gt; print, led_switch(3, /ON)</i>	
2. Set loop parameters	Set loop parameters as described in 17.4 AO loop parameters	If LEDs are not visible on the ccd39, try reducing the frequency setting (values down to 50 Hz may be used.)
3. Ensure rotator tracking is ON	Open the WFS Control GUI (see Procedure 17.1) and check that Telescope Rotator tracking is Enabled (green). If not, start it clicking the "On" button.	
4. Move telescope derotator to 0 degrees position	In the telescope rotator panel, enter 0 in the position box next to the "Slew to Hold" button Press "Slew to Hold" button	
5. Collect data	Use the Optical Loop GUI to save a tracking number with Frames enabled (see section 17.5 Saving AO telemetry)	Only the Frames checkbox is required.
6. Repeat measurement along a circle	Restart from step 5 at 30-degree intervals (0, 30, 60.... 360)	
7. Turn off the four LEDs.	Start aoidl on adsecdx: <i>[AOeng@adsecdx ~]\$ aoidl</i> <i>IDL&gt; @startup-onlycom</i> <i>IDL&gt; print, led_switch(0, /OFF)</i> <i>IDL&gt; print, led_switch(1, /OFF)</i> <i>IDL&gt; print, led_switch(2, /OFF)</i> <i>IDL&gt; print, led_switch(3, /OFF)</i>	
8. Analyze data	Use the elab-lib to build a dataset with all the tracking numbers, and sum all the ccd39 frames together.	



Doc.No : nnnfnnn  
 Version : B  
 Date : 22 Jan 2013

## LBT-ADOPT TECHNICAL REPORT

26/34



### 14 Preset table update

The AO preset uses a configuration table to select system parameters based on the reference star magnitude. Several such tables are available and one of them is selected using a file link. If one wants to change the AO table, the script "aotable.py" can be used as follows:

#### Prerequisites:

- System is NOT executing a Preset/RunAO command. No check is done, so this can break a preset if done at the wrong time.

Action	Procedure	Notes
1. Start script	Open terminal on wfsdx and write: <code>[AOeng@wfsdx]\$ aotable.py</code>	
2. Select one of the available tables	A list of tables is displayed with the currently used one evidenced. Enter the number corresponding to the new table and press Enter	
3. Exit script	Enter a zero selection to exit the script.	Next preset will use the new table.

Example output of the script with table #6 selected:

```
[AOeng@wfsdx scripts]$ aotable.py

choice      : nmodes   base      rec          filename
(*=current)
1           : 300      KL_v17    20130919_035723  table_IRTC_ACE-AO.badseeing.txt.fdm
2           : 300      KL_v16    20130919_035102  table_IRTC_ACE-AO.badseeing.txt.newpup
3           : 300      KL_v16    20130915_224932  table_IRTC_ACE-AO.badseeing.txt.orig
4           : 400      KL_v16    20130915_224932  table_IRTC_ACE-AO.goodseeing.txt
5           : 400      KL_v17    20130919_024505  table_IRTC_ACE-AO.goodseeing.txt.fdm
6           * : 400      KL_v16    20130919_014135  table_IRTC_ACE-AO.goodseeing.txt.newpup
7           : 5        KL_v7     20101028_110316  table_IRTC_TTM-AO.txt

Enter choice (0 = exit program)
```

### 15 PISCES tasks

#### 15.1 Focusing

An engineering procedure is available to automate the task of focusing the PISCES camera. This procedure is provided for convenience only and, since it relies on undocumented communication between the FLAO and PISCES software, it should not be expected to be available indefinitely.

#### Prerequisites:

- System is in closed loop with the PISCES camera online

Action	Procedure	Notes
1. Check shared disk	On WFS computer <code>[AOeng@wfsdx ~] ls /mnt/newdata</code>	

INAF – Osservatorio Astrofisico di Arcetri  
 Largo E. Fermi, 5 - 50125 Firenze - ITALY  
<http://adopt.arcetri.astro.it>



	If it is empty, then the shared disk is not mounted: <code>[AOeng@wfsdx ~] sudo mount /mnt/newdata</code>
2. Start GUI	On WFS computer: <code>[AOeng@wfsdx ~] AutoFocusPiscesGui.py</code>
3. Enter parameters	Focus range and step are in mm. PSF position on Pisces (x,y) may be approximate up to about 10 pixels and can be seen using ds9.
4. Start measurement	Press "Start" to start the focus script. The Z stage will be moved in successive focus positions, and at each step a cube of Pisces images will be taken

## 15.2 Telemetry synchronization

Storage of AO telemetry data is synchronized with the Pisces camera: each time a Pisces image is taken, a tracking number is saved at the beginning of the Pisces acquisition. The tracking number contains about four seconds of telemetry data.

Start/stop synchronization:

Action	Procedure	Notes
1. Start system processes GUI	See procedure 17.1.	
2. Start or stop synchronization process.	Locate the process called "Pisces telemetry sync" and start/stop as needed.	

Data is saved at each Pisces image acquired with the observe script. No message is displayed.

Synchronization is active by default.

## 16 Example Use of elablib

The following routines are needed to start the *elablib* and execute the basic commands to analyze a measurement.

The *xelab* GUI is meant to provide a quick visualization of the information.

The *elablib* routines can be used at IDL prompt for deep analysis and scripting of the analysis procedures. They require an deep knowledge of object-oriented IDL. They are meant to be used by developers and AO experts to analyze AO performances with scripts.

Action	Procedure	Notes
Start <i>elablib</i>	Open a terminal on adsecdx: <code>ssh -X AOeng@adsecdx</code> Start idl: <code>[AOeng@adsecdx ~]\$ aoidl</code> Init <i>elablib</i> : <code>IDL&gt; ao_init</code>	
Start <i>xelab</i>	From a running <i>elablib</i>	<i>elablib</i> and <i>xelab</i>



Doc.No : nnnfnnn  
Version : B  
Date : 22 Jan 2013

## LBT-ADOPT TECHNICAL REPORT

28/34



	<p><i>AO&gt; xelab</i> Select the date in the left-hand panel. The log of all the measurements of the selected date is printed. Select a single measure: most significant values are shown, together with the PSF and a plot of modal amplitudes.</p>	<p>GUI are under continuous development.</p>
<b><i>elablib help</i></b>	<p>From a running elablib, suppose you need to analyze in detail a single measurement (e.g. 20130122_180545) because you want to check the rotator angle.</p> <p>Load the measure <i>AO&gt; ee=getaoelab('20130122_180545')</i></p> <p>Ask to the help with a sensible hint: <i>AO&gt; ee-&gt;help, 'rotat'</i></p> <p>In the list of help entries containing the token 'rotat' select the one about rotator and print the value <i>AO&gt; print, (ee-&gt;wfs_status()-&gt;rerotator())</i> <i>179.99899</i></p>	



Doc.No : nnnfnnn  
Version : B  
Date : 22 Jan 2013

## LBT-ADOPT TECHNICAL REPORT

29/34



### 17 Miscellaneous

The following procedures are either widely used or seldom needed.

#### 17.1 Start GUIs

Action	Procedure	Notes
Open AOS GUI	Log on obs3 Open terminal Type: AOSGUI right	user: lbto pwd: OPSin2010
Open AOS Commands GUI	Open AOSGUI (see above) Press the Command button (top-right)	
Open WFS Arbitrator GUI	Open wfseng panel from wfsdx terminal <code>[AOeng@wfsdx ~]\$ wfseng</code> Click on "WFS Arbitrator GUI" button wfseng panel	
Open WFS Hardware GUI	Open wfseng panel from wfsdx terminal <code>[AOeng@wfsdx ~]\$ wfseng</code> Click on "WFS HW GUI" button on wfseng panel	
Open CCD39 GUI	Open WFS Arbitrator GUI (see above) <b>NB Only if it has not been done before, set loop parameters:</b> In "Loop params" panel of "WFS Control GUI" set <ul style="list-style-type: none"><li>• Binning=1,</li><li>• Loop frequency=200Hz,</li><li>• Modulation=3</li></ul> Click Apply Click on "WFS camera" blue button	
Open AdSec Control GUI	Open adsceng panel from adsecdx terminal <code>[AOeng@adsecdx ~]\$ adsceng</code> Click on "AdSec Control GUI" button on adsceng panel	
Open PSFGUI2	Log on obs3 Open terminal Type: PSFGUI right Click on Secondary button: the "Right PSF Secondary Mirror Active Optics and Collimation Control" GUI (PSFGUI2) is opened	
Open telescope rotator panel	Log on obs3 Open terminal Type: MCSGUI right Click on Rotators button and then on Right Front	
Open IIF GUI	Log on obs3 Open terminal Type: IIFGUI right	
Open OSS GUI	Log on obs3 Open terminal Type: OSSGUI	



Doc.No : nnnfnnn  
 Version : B  
 Date : 22 Jan 2013

LBT-ADOPT TECHNICAL REPORT  
 30/34



## 17.2 Check and set Telescope configuration

These procedures are needed to check the telescope configuration

Action	Procedure	Notes
<b>Check Authorized Instrument</b>	Open IIFGUI In the top right (left) text area you see the authorized instrument and focal station Ask the TO / telescope manager if it is not what you needed	
<b>Check Swing Arms</b>	Open OSSGUI Click on one of the swing arm icons on the right side In the "Secondary (M2)" panel check the "Dep. Switches" status. It should be "Dep". If it is not, ask the TO/Telescope Manager to deploy it. In the "Tertiary (M3)" panel check the "Dep. Switches" status. It should be "Dep". If it is not, ask the TO/Telescope Manager to deploy it.	
<b>Home AGW probe</b>	Ask the TO/Telescope Manager. Hint: At the telescope@AGW prompt at TO console type: <code>home -u 2 -m 21</code>	

## 17.3 WFS stage centering

This procedure might be needed only when the instrument has been reinstalled. Be sure that this is actually needed.

**THIS IS NOT COMPLETED**

Action	Procedure	Notes
1.	Open WFS HW GUI	
2.	Setup CCD47	In the HW GUI, select CCD47 panel
3.	Open WFS Control GUI and click on "Acquire TV dark"	

## 17.4 AO loop parameters

Standard loop parameters for calibration tasks can be set as follows:

Action	Procedure	Notes
1.	Open Wfs Arbitrator GUI	
2.	Set loop parameters	In the "Loop params" panel, set the following parameters: <ul style="list-style-type: none"> <li>Binning=1</li> </ul>



Doc.No : nnnfnnn  
Version : B  
Date : 22 Jan 2013

## LBT-ADOPT TECHNICAL REPORT

31/034

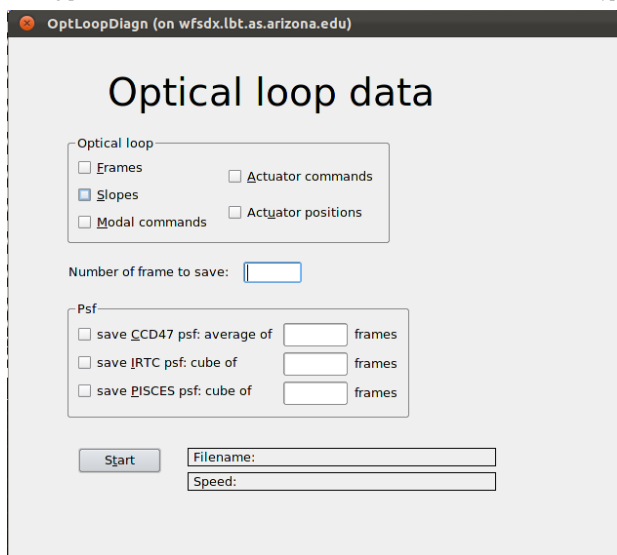


- Loop frequency= 200 Hz
  - Modulation = 3
- And click "Apply"
- display is normal while this happens.

### 17.5 Saving AO telemetry

Telemetry data is continuously generated by the AO system, but it is not stored on disk due to the huge space required. The operator can request that the next N telemetry frames are stored on disk. This data will be saved into a "tracking number", which is a timestamp in the format YYYYMMDD\_HHMMSS. Each tracking number is a sequence of continuous data, typically a few seconds long. A directory is created for each tracking number, containing a number of FITS files.

The GUI for requesting saving of tracking numbers is called "Optical loop diagnostic GUI". It can be started from the wfscng panel as described in 17.1 Start GUIs, or from a terminal on wfscdx typing OptLoopDiagnGui".



#### Prerequisites:

- WFS must be powered on. As a minimum, ccd39 must be on and operating. If other WFS devices are off, telemetry data will be saved but may be incomplete.

#### Required fields:

- **Number of frames to save:** typical numbers range from 4000 to 10000. As a rule of thumb, the system saves 500 frames per second at full speed, and progressively less down to 100 per second when the AO loop is running slowly on faint stars. The maximum number is limited by the memory available on the PC, and is around 50000.

INAF – Osservatorio Astrofisico di Arcetri  
Largo E. Fermi, 5 - 50125 Firenze - ITALY  
<http://adopt.arcetri.astro.it>



Doc.No : nnnfnnn  
 Version : B  
 Date : 22 Jan 2013

**LBT-ADOPT TECHNICAL REPORT**

32034



**Optional fields:**

- Frames: save ccd39 frames
- Slopes: save slopes calculated from ccd39 frames.
- Modal commands: modes as calculated by the ASM. Will be zero unless the system is in closed loop.
- Actuator commands: commands sent to ASM actuators. Will be zero unless the system is in closed loop.
- Actuator positions: ASM actuator positions. Will be zero unless the system is in closed loop.
- PSF checkboxes: will read N frames from various detectors, average them and save the result on disk. Take care of only selecting those detectors that are on and available, otherwise an error will occur. Note: PSFs are saved in parallel with telemetry. Long averages of PSF data may take much longer than telemetry data to finish, in that case the tracking number will be considered complete only when the PSF has finished.

**Usage:**

Fill in the required fields, any optional fields and click on Start: the tracking numbers will be immediately displayed in gray, along with the current telemetry speed. When completed, the tracking number will turn green. In case of any error, the tracking number display will turn red with an "Error " string.

**Result:**

When the tracking number is completed, a directory with YYYYMMDD\_HHMMSS format has been created in the data repository. Inside the directory, these files can be found:

- wfs.fits: a FITS file with no data and a header with the complete WFS status and configuration
- adsec.sav: a similar file for the ASM status, but in IDL .SAV format
- other fits files: telemetry data. Many files are only optionally saved.

**17.6 Tracking number data is best analyzed with elab-lib (see section 15.2 Telemetry synchronization)**

Storage of AO telemetry data is synchronized with the Pisces camera: each time a Pisces image is taken, a tracking number is saved at the beginning of the Pisces acquisition. The tracking number contains about four seconds of telemetry data.

Start/stop synchronization:

Action	Procedure	Notes
3. Start system processes GUI	See procedure 17.1.	
4. Start or stop synchronization process.	Locate the process called "Pisces telemetry sync" and start/stop as needed.	

Data is saved at each Pisces image acquired with the observe script. No message is displayed.

Synchronization is active by default.

Example Use of elablib)





Doc.No : nnnfnnn  
Version : B  
Date : 22 Jan 2013

## LBT-ADOPT TECHNICAL REPORT

33034



### 17.7 Coma correction

After the first alignment, the spot will most likely show a big coma aberration. This can be removed with a “move on sphere” command to the hexapod. To apply a coma of magnitude C, an **offset** must be applied to both the **current** X position and RY tilt of the hexapod (or Y position and RX tilt):

- $\text{deltaX} = +C * 10\text{microns}$
- $\text{deltaRY} = +C \text{ arcsec}$

To correct coma along the other axis:

- $\text{delta Y} = +C * 10 \text{ microns}$
- $\text{delta RX} = -C \text{ arcsec}$

Note the minus sign on the RX field

It is best to start correcting the coma on one axis and, when the coma bar has become vertical (or horizontal), correct on the other axis. A couple of iterations might be needed.

Action	Procedure	Notes
1. Open PSFGUI2	Open PSFGUI2 (See Procedure 17.1)	
2. Correct Coma	Modify Global Offsets ( see above) until PSF looks ok.	

### 18 Maintaining this document

Please report any mistake / comment / suggestion to [busoni@arcetri.astro.it](mailto:busoni@arcetri.astro.it)



Doc.No : nnnfnnn  
Version : B  
Date : 22 Jan 2013

## LBT-ADOPT TECHNICAL REPORT

34034



Doc\_info\_start  
Title: FLAO user procedures  
Document Type: Technical Report  
Source: INAF-Osservatorio Astrofisico di Arcetri  
Issued by: Lorenzo Busoni, Alfio Puglisi, Juan Carlos Guerra, Enrico Pinna, Simone Esposito  
Date\_of\_Issue: 22 Jan 2013  
Revised by:  
Date\_of\_Revision:  
Checked by:  
Date\_of\_Check:  
Accepted by:  
Date\_of\_Acceptance:  
Released by:  
Date\_of\_Release:  
File Type:MS-WORD  
Local Name:  
Category: WRITE THE CAN CATEGORY HERE  
Sub-Category: WRITE THE CAN SUB-CATEGORY HERE  
Assembly: WRITE THE CAN ASSEMBLY HERE  
Sub-Assembly:  
Part Name:  
CAN designation: nnnfnnn  
Revision: B  
Doc\_info\_end